

Overview of CA's New Linux on System z Management Offerings and z/VM Products Update

August 9, 2011 - SHARE Session 10048

Brian Jagos & Summer Spaulding

CA Technologies



Abstract

In this session, we will review the Linux on System z management suite that was announced earlier in the week and will show how these products can be used in conjunction with CA's existing VM solutions to provide holistic monitoring, management, and troubleshooting of your Linux on System z and z/VM environments. We will also cover enhancements to the CA VM product suite that were recently made GA and will share CA's roadmap for longer-term features and enhancements.

Agenda

- Review of new CA offerings for Linux on System z Management
- CA Technologies Advantage
- Practical Examples: Using new offerings with CA z/VM Product Suite
- CA z/VM Product Suite Enhancements
- CA z/VM Product line and Linux on System z Management Roadmap

1. THE MARKET

Mainframe Platform Drivers

- Business Growth
- Hardware Evolution
- Mainframe Virtues



2. THE CHALLENGES

Control Costs

- Do More...
- "...with less"
- "...with nothing"

Sustain Critical Skills

- Build next generation team dynamically
- On ramp for next gen is long and complex

Increase Agility

- Provision services faster
- Multiplatform data center
- Solve critical issues

4. THE PROGRAMS

Promises Made

Maximize Value

1

Simplify Management

2

Practical Innovation

3

Promises Kept

Customer Engagement
Technology Exploitation

Mainframe Software Mgmt
Mainframe Stack

Integration, Productivity,
and Insight

3. THE STRATEGY

Maximize
Value

Simplify
Management

Practical
Innovation

Best in Class Quality, Support, and
Customer Experience

Linux on System z strategy overview

- ***Simplify the management and security of Linux on System z with a management suite***
 - Deliver a management and security suite for Linux on System z that can be managed by both mainframe and distributed staffs
 - Empower customers with the ability to consolidate distributed Linux servers onto Linux on System z
- ***Make Linux on System z a cost-effective choice for customers***
 - deliver a full lifecycle management solution for Linux on System z
- ***Agility delivered***
 - allow clients to quickly deliver capacity on demand with Linux on System z

CA Solutions for Linux on System z Announcement Overview

- **New product enhancements and strategic partnerships will help you reduce costs, improve performance and more efficiently manage Linux on System z**
 - ***New releases of CA VM:Manager Suite for Linux on System z** provide various feature enhancements including new support for managing tapes for Linux on System z, and others that help customers install, deploy, and service their CA z/VM products more effectively and quickly*
 - ***Velocity Software zVPS Performance Suite** complements CA solutions with real-time access to detail data from z/VM and Linux on System z platforms for optimized performance, capacity planning and cost chargeback*
 - ***INNOVATION Data Processing UPSTREAM for Linux on Z and UPSTREAM for z/OS UNIX** extend CA data protection capabilities with file level backup for Linux on System z and z/OS UNIX files*
 - ***CA Mainframe Connector for Linux on System z** allows CA z/OS-based automation products to receive event information from Linux on System z environments*
- **Combined, these solutions will help remove barriers and reduce time, cost and risk of consolidating workloads to Linux on System z**

Velocity Software zVPS™ Performance Management Suite

User Log Activity - Microsoft Internet Explorer provided by CA

http://zvm001.ca.com:7080/ZVIEW/ZVIEW.HTML

v1.0.2.9 Welcome

VELOCITY SOFTWARE zVIEW - CA TECHNOLOGIES - ZVM001 (ZVM001)
 ESAUSR1 - User Log Activity

Close Window Pause Updates

Graphs	UserID	Logonby	<-----Session Logon Times----->		Measured Logged on Time	<Access Type>			TCPU actv	VCPU actv	Observations/Server			
			<First Session> Date Time	<Last Session> Date Time		<# Sessions>	SNA	Dial						Othr
ESAMGMT	FTPSSERVE	.	07/22 00:46:59	07/22 00:46:59	3:00	0	0	1	3	3	4	TCPIP	.	.
ESAHDR	GCS	.	07/22 00:46:58	07/22 00:46:58	3:00	0	0	1	0	0
ESAMAIN	LINUX120	.	07/22 07:52:10	07/22 07:52:10	3:00	0	0	1	3	3
+ SLA	LINUX122	.	07/22 01:01:40	07/22 01:01:40	3:00	0	0	1	3	3
USER	MAINT	.	07/22 07:44:24	07/22 07:44:24	3:00	0	0	1	0	0	1	VMSECURE	.	.
ESASR1	OPERATOR	.	07/22 07:42:23	07/22 07:42:23	3:00	0	0	1	3	3	31	TCPIP	.	.
ESASRV1	RSCS	.	07/22 00:47:23	07/22 00:47:23	3:00	0	0	1	3	3	4	TCPIP	.	.
ESASR2	RSCSDNS	.	07/22 00:46:59	07/22 00:46:59	3:00	0	0	1	3	3	4	TCPIP	.	.
ESASR3	SNMPD	.	07/22 00:46:59	07/22 00:46:59	3:00	0	0	1	3	3	4	TCPIP	.	.
ESASRVC	TCPIP	.	07/22 00:46:58	07/22 00:46:58	3:00	0	0	1	3	3	1	OPERATOR	3 RSCS	6 RSCS
ESAACCT	VMSCHED	.	07/22 00:46:58	07/22 00:46:58	3:00	0	0	1	0	0
ESAXACT	VMSECURE	.	07/22 00:46:58	07/22 00:46:58	3:00	0	0	1	3	3	1	WAVEWRKL	.	.
ESAUSR2	VMSERVR	.	07/22 00:46:58	07/22 00:46:58	3:00	0	0	1	2	2	1	VSMPROXY	2 ZADMIN	1 ZWEB
ESAUSR3	VMSERVS	.	07/22 00:46:58	07/22 00:46:58	3:00	0	0	1	1	1	1	VSMPROXY	1 VSMWORK1	.
ESAWKLD	VMSERVU	.	07/22 00:46:58	07/22 00:46:58	3:00	0	0	1	3	3	3	ZADMIN	1 ZSERVE	1 ZTCP
ESAVECT	VMSPOOL	.	07/22 00:46:58	07/22 00:46:58	3:00	0	0	1	3	3
ESAUSRQ	VMX\$0001	.	07/22 00:47:00	07/22 00:47:00	3:00	0	0	1	0	0	1	VMSECURE	.	.
ESASYSQ	VMX\$0002	.	07/22 00:47:00	07/22 00:47:00	3:00	0	0	1	0	0	1	VMSECURE	.	.
ESAUSER	VSMPROXY	.	07/22 00:59:52	07/22 00:59:52	3:00	0	0	1	0	0	1	VMSERVS	.	.
ESATUSRS	VSMREQIN	.	07/22 00:59:47	07/22 00:59:47	3:00	0	0	1	2	2	5	VMSERVS	.	.
ESATOPU	VSMREQIU	.	07/22 00:59:49	07/22 00:59:49	3:00	0	0	1	2	2	5	VMSERVS	.	.
ESAIDLE	VSMWORK1	.	07/22 00:59:38	07/22 00:59:38	3:00	0	0	1	3	3	2	VMSERVS	.	.
ESAUSRS	VSMWORK2	.	07/22 00:59:42	07/22 00:59:42	3:00	0	0	1	3	3	2	VMSERVS	.	.
ESAUSPG	VSMWORK3	.	07/22 00:59:44	07/22 00:59:44	3:00	0	0	1	3	3	2	VMSERVS	.	.
+ SFS	WAVEWRK1	.	07/22 00:50:59	07/22 00:50:59	3:00	0	0	1	3	3	4	TCPIP	.	.
+ PROCESSOR	WAVEWRK2	.	07/22 00:50:59	07/22 00:50:59	3:00	0	0	1	3	3	4	TCPIP	.	.
ESACDIII	WAVEWRK3	.	07/22 00:50:58	07/22 00:50:58	3:00	0	0	1	3	3	4	TCPIP	.	.

Velocity Software zVPS™ Performance Management Suite

Key Capabilities

— *Performance Analysis*

- Provides real-time metrics on all facets of performance for all servers including z/VM, Linux on System z and distributed servers
- Enables immediate analysis of real-time problems

— *Capacity Planning*

- Provides trend data for projecting capacity requirements of future workloads
- Interfaces to popular enterprise capacity planning facilities such as CA MICS® Resource Management

— *Chargeback and Accounting*

- Delivers data needed for chargeback and accounting, with complete and accurate data for both Linux on System z applications and z/VM virtual machines

— *Operational Alerts*

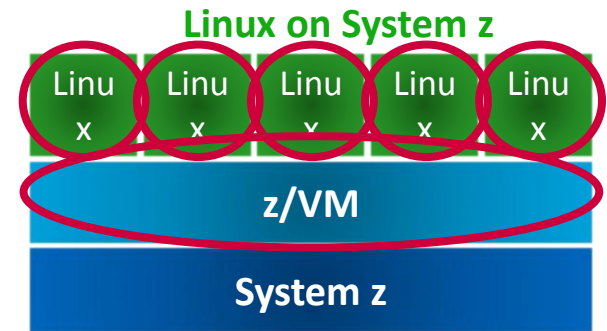
- Helps ensure performance and capacity issues are immediately detected and reported.
- Provides alerts via a 3270 interface, web-based browser, and via SNMP alerts to integrate into your management console

Velocity Software zVPS™ Performance Management Suite

The Differentiators

— *Comprehensive Data Collection*

- z/VM Subsystems (processor, storage, I/O, paging)
- z/VM Guest resources
- Linux on System z – disk, storage, processor
- Networked servers (Linux, Unix, Windows)
- Linux applications



— *High data Capture Rate*

- Critical for accurate analysis, reporting, and accounting

— *Uses existing Linux on System z SNMPD process for data capture*

- Eliminates overhead and maintenance of new performance agent

Velocity Software zVPS™ Performance Management Suite

Solution Components

zMON™	Real-time graphical display of up-to-the-minute performance information
zMAP™	Historical performance reporting provides in-depth post-analysis and capacity planning
zTCP™	Network performance monitor for distributed servers, Linux networks and z/VM
zPRO™ Portal	Web-based interface for z/VM and Linux on System z performance management. Also provides zVPS™ product administration
zWRITE™	Data collection facility that reduces monitor data without losing information relevant to proper performance analysis
zVWS™	High-speed web server for optimum z/VM performance and reduced CPU overhead

UPSTREAM[®] for Linux on Z and UPSTREAM[®] for z/OS UNIX

Director - Microsoft Internet Explorer provided by CA

C:\Program Files\Innovation Data Processing\Director\usdir.html

Live Search

File Options View Help Window

UPSTREAM Status - mysde13:1972

General Information				Cluster Free Space			TCP/IP			
Config Member:	UPSTREAM	Catalog:	84%	Started Task:	TCPIP					
VTAM Applid Id:	UPSTREAM	File Info:	45%	Host Address:	141.202.36.122					
Security Level:	0	File Data:	99%	Host Port:	1972					
Host Version:	3.6.0									

ID	Profile	IP Addr/LU Name	User	Operation	Elapsed	CPU Secs	File	Bytes	Byte/sec	%
0012	LINUX121	141.202.200.176	SPASU01	BACKUP	00:30:28	13.7	109,...	2,028,494K	1,136,063	80%
0021	MONITOR	10.132.6.105		MONITOR	00:00:00	0.0	0	OK	0	n/a
0020	USTBATCH	141.202.200.177	SPASU01	USTB122F	00:01:35	0.0	0	OK	0	n/a

object(s):

Profile: Search Explore Snap Shot Collection Add Exclude Add directory Add dir/w sub-dir(s) Add file(s) Filter...

Find... Refresh Specify restore to...

Target: (none) Profile: (none) Parameter file: 'Untitled' Action: Restore

UPSTREAM[®] for Linux on Z and UPSTREAM[®] for z/OS UNIX

- Integrated backup/restore solution suite for Linux on System z, z/OS USS and other distributed environments
- Capabilities are provided at the file level directly to z/OS mainframe tape or DASD
- Uses the z/OS tape management, security and scheduling systems, to allow multiple simultaneous backups and restore operations
- Can automate and integrate using existing CA management products (i.e., CA7, CA1, OPS/MVS, SYSVIEW)
- Combines the backup of critical open systems data into existing Disaster Recovery plans and processes

UPSTREAM[®] for Linux on System z and UPSTREAM[®] for z/OS UNIX

Solution Components

UPSTREAM[®] for Linux on Z

Using the z/OS infrastructure, provides backup and recovery capabilities for Linux on System z, Windows , and other distributed environment. Includes :

UPSTREAM z/OS - Host Data Storage Server

UPSTREAM Client -Server side backup “agent”

UPSTREAM Director – Java-based Application portal

UPSTREAM[®] for z/OS UNIX

File level backup and recovery for ZFS/HFS files under Unix System Services for z/OS

CA Mainframe Connector for Linux on System z

```
QANM1031----- Resource Monitor -----CA31-0022
Command ==> █ Scroll ==> CSR
```

System	Class	Resource	Desired	Actual	Mode	Logical	Ovr	
\$SERVICE	SVC	FRED	ACTIVE	FAILED	MANUAL	ATTENTION		
CA31	DASD	DASD	ACTIVE	INACT--19	MANUAL	ATTENTION		
CA31	INIT	1	INACTIVE	C=T				
CA31	INTNL	PR(SOLVCICS)	ACTIVE	DEGRADED	AUTOMATED	DEGRADED		
CA31	JES	JES2	ACTIVE	ACTIVE	MANUAL	OK		
CA31	JOB	CICSPROD	ACTIVE	ACTIVE	MANUAL	OK		
CA31	PRT	PRT10	ACTIVE	INACTIVE	MANUAL	ATTENTION		
CA31	SPOOL	SPOOL	ACTUAL	UTILIZATION: 67.2961 PERCENT				
CA31	STC	DENMX9JV	ACTIVE	ACTIVE	MANUAL	OK	G	
CA31	STC	D10ADIST	ACTIVE	ACTIVE	MANUAL	OK	G	
CA31	STC	D10AIRLM	ACTIVE	ACTIVE	MAN-ARM	OK	G	
CA31	STC	D10AMSTR	ACTIVE	ACTIVE	MAN-ARM	OK	G	
CA31	STC	QANM10	ACTIVE	ACTIVE	MANUAL	OK	G	
CA31	TAPE	0E7B	UNIT 0E7B IS ONLINE/ACTIVE					
CA31	TAPE	0E7C	UNIT 0E7C IS ONLINE/ACTIVE					
ZVM011	LINUX	LINUX181	ACTIVE	ACTIVE	MANUAL	OK		
ZVM011	LXAPP	LINUX181.CALXAGNT	ACTIVE	ACTIVE	MANUAL	OK	M	
ZVM011	LXAPP	LINUX181.QA1	ACTIVE	INACTIVE	MANUAL	ATTENTION		
ZVM011	LXAPP	LINUX181.QA2	LINUX181.QA2 HAS BEEN STOPPED BY KILL					
ZVM011	LXAPP	LINUX181.QA3	LINUX181.QA3 IS STARTING					
ZVM011	LXAPP	LINUX181.QA4	ACTIVE	INACTIVE	MANUAL	ATTENTION		
ZVM011	LXAPP	LINUX181.QA5	LINUX181.QA5 IS ACTIVE					
ZVM011	LXAPP	LINUX181.QA6	ACTIVE	INACTIVE	MANUAL	ATTENTION		
ZVM011	LXAPP	LINUX181.QA7	LINUX181.QA7 HAS BEEN FORCED TERMINATED					
ZVM011	LXAPP	LINUX181.QA8	ACTIVE	INACTIVE	MANUAL	ATTENTION		
ZVM011	LXAPP	LINUX181.QA9	LINUX181.QA9 HAS BEEN STOPPED BY KILL					
ZVM011	LXAPP	LINUX181.QA10	ACTIVE	INACTIVE	MANUAL	ATTENTION		
ZVM011	LXAPP	LINUX181.QA11	LINUX181.QA11 IS INACTIVE					
ZVM011	LXAPP	LINUX181.QA12	ACTIVE	INACTIVE	MANUAL	ATTENTION		
ZVM011	LXAPP	LINUX181.QA13	LINUX181.QA13 IS ACTIVE					
ZVM011	UMCST	ZVM011	ACTIVE	ACTIVE	MANUAL	OK		

CA Mainframe Connector for Linux on System z

- ***Automate Management of Linux on System z with CA SOLVE:Operations® Automation***
- ***Connector for Linux on System z connects a CA SOLVE:Operations Automation region with z/VM systems and their z/Linux guests via IP Connections***
 - z/Linux and z/VM unsolicited event traffic is normalized and merged with the z/OS console messages in CA SOLVE:Operations Automation
 - z/Linux and z/VM command-and-response functions are available and behave like a specialized z/OS system command
- ***Available with CA SOLVE:Operations® Automation R11.9***
- ***Planned availability with CA OPS/MVS® release targeted for mid-2012***

CA Technologies Advantage

CA Technologies is an IT management software and solutions company

CA Technologies is executing a bold vision for the future, where IT resources are delivered with unprecedented levels of flexibility

- New offerings easily added to current CA Licensing
- Product support through existing CA Support processes
 - Licensing
 - Product Software, maintenance and Documentation access
 - Problem reporting
- CA commitment to maximize value through continued integration with other CA product offerings

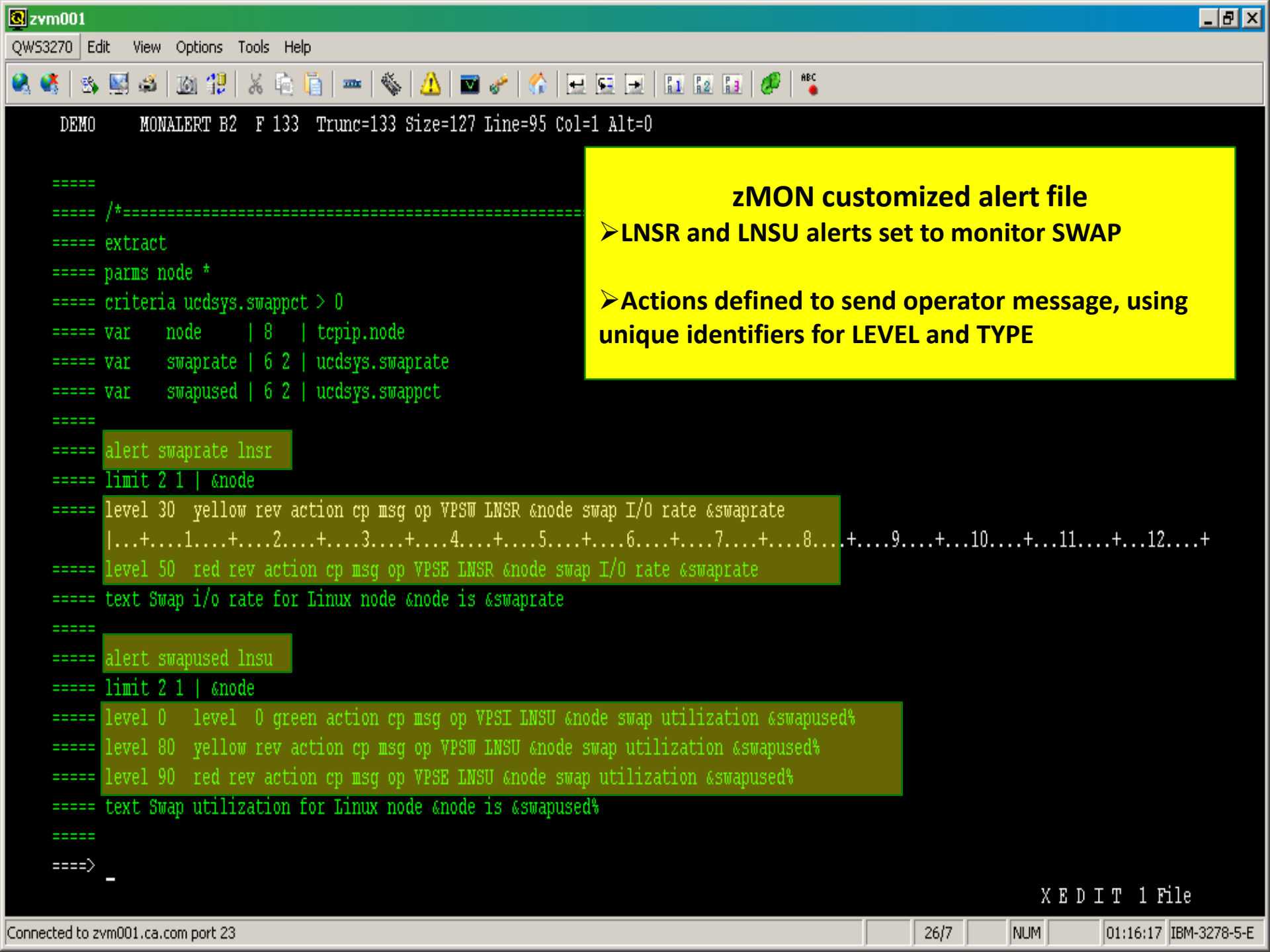
Our products enable customers to **manage** and **secure** IT environments and **deliver more flexible IT services**

With CA Technologies, **IT powers business agility**

Example 1: Server SWAP Space – Monitoring, Analysis and Resolution

Scenario – New server, LINUX120, provisioned for new application. Server SWAP performance hits critical level when application testing begins.

- ***zVPS™ Performance Suite***
 - Customized alerts implemented via zMON MONALERT file
 - ZALERT service machine running to process zMON alerts
- ***VM:Operator***
 - SECUSER Windows for each Linux on System z server
 - HOLDMSG table for specific zVPS Alerts
 - LOGTABLE and SYSTABLE – Routing customized alerts



DEMO MONALERT B2 F 133 Trunc=133 Size=127 Line=95 Col=1 Alt=0

```
====
==== /*-----
==== extract
==== parms node *
==== criteria ucdsys.swaprate > 0
==== var node | 8 | tcpip.node
==== var swaprate | 6 2 | ucdsys.swaprate
==== var swapused | 6 2 | ucdsys.swappct
====
==== alert swaprate lnsr
==== limit 2 1 | &node
==== level 30 yellow rev action cp msg op VPSW LNSR &node swap I/O rate &swaprate
|...+...1...+...2...+...3...+...4...+...5...+...6...+...7...+...8...+...9...+...10...+...11...+...12...+
==== level 50 red rev action cp msg op VPSE LNSR &node swap I/O rate &swaprate
==== text Swap i/o rate for Linux node &node is &swaprate
====
==== alert swapused lnsu
==== limit 2 1 | &node
==== level 0 level 0 green action cp msg op VPSI LNSU &node swap utilization &swapused%
==== level 80 yellow rev action cp msg op VPSW LNSU &node swap utilization &swapused%
==== level 90 red rev action cp msg op VPSE LNSU &node swap utilization &swapused%
==== text Swap utilization for Linux node &node is &swapused%
====
====>
```

zMON customized alert file

- LNSR and LNSU alerts set to monitor SWAP
- Actions defined to send operator message, using unique identifiers for LEVEL and TYPE

Status of new LINUX120 Server and ZVM001 system before new App Starts

v1.0.2.9

Welcome

ESAMAINInitial display of overall
Status of z/VM system

zVIEW - CA TECHNOLOGIES - ZVM

ESAMAIN - System Overview

Close Window

Pause Updates

Graphs

Time	<---Users--->			Transact.		<Processor>			Cap-	<--Storage (MB)-->			<-Paging-->		<-----I/O----->			<MiniDisk>	Spool	
	<-avg number->	On	Actv	In	Q	Sec.	Time	CPUs	Total	Virt.	Ratio	Fixed	Active	Stor	<pages/sec>	<-DASD-->	Other	<-Cache-->	Page	
											User	Resid.	Load	XStore	DASD	Rate	Resp	Rate	%Hit	Rate
20:23:00	42	21	4.0	3.7	0.40	1	2.7	2.5	100	32	768	0.8	0	0	2	1	0	1	91.1	0
20:22:00	42	23	4.0	3.0	0.58	1	2.8	2.6	100	31	769	0.8	0	13	6	1	0	1	90.7	0
20:21:00	42	21	4.0	3.4	0.49	1	2.8	2.6	100	31	770	0.8	0	23	7	1	0	0	81.5	0
20:20:00	42	23	2.0	3.6	0.43	1	2.9	2.7	100	31	769	0.8	0	35	11	1	0	1	93.9	0
20:19:00	42	21	4.0	3.1	0.60	1	2.9	2.7	100	32	769	0.8	0	16	7	1	0	11	97.2	0
20:18:00	42	21	2.0	3.3	0.45	1	2.8	2.6	100	31	770	0.8	0	0	2	1	0	1	95.5	0
20:17:00	42	21	4.0	3.6	0.44	1	2.8	2.6	100	32	769	0.8	0	1	2	1	0	1	91.1	0
20:16:00	42	21	4.0	3.5	0.44	1	3.0	2.8	100	32	770	0.8	0	14	6	1	0	1	84.8	0
20:15:00	42	22	3.0	3.4	0.49	1	2.8	2.6	100	32	770	0.8	0	3	3	1	0	1	95.7	0
20:14:00	42	21	4.0	2.4	0.71	1	12.0	11.8	100	32	769	0.8	0	18	8	1	0	5	91.6	0
20:13:00	42	22	4.0	2.1	0.58	1	24.1	23.9	100	32	768	0.8	0	11	6	2	0	8	89.7	0
20:12:00	42	22	5.0	1.8	0.75	1	24.9	24.7	100	31	769	0.8	0	14	6	1	0	8	99.4	0
20:11:00	42	24	7.0	2.0	0.55	1	24.0	23.8	100	31	772	0.8	0	54	21	1	0	9	97.4	0
20:10:00	42	22	7.0	1.6	1.08	1	22.5	22.3	100	31	773	0.8	0	1	5	3	0	8	79.6	0
20:09:00	42	22	8.0	1.9	0.66	1	23.1	22.8	100	31	772	0.8	0	0	4	1	0	7	99.0	0
20:08:00	42	21	7.0	1.9	0.74	1	23.1	22.9	100	31	772	0.8	0	1	4	1	0	7	99.3	0
20:07:00	42	22	8.0	1.7	0.81	1	23.4	23.2	100	32	772	0.8	0	17	6	1	0	7	98.3	0
20:06:00	42	21	6.0	2.0	0.62	1	25.5	25.3	100	32	772	0.8	0	32	7	2	0	8	92.8	0
20:05:00	42	22	5.0	2.3	0.47	1	22.5	22.2	100	32	773	0.8	0	73	19	2	0	6	58.8	0
20:04:00	42	23	5.0	1.7	0.89	1	25.4	25.1	100	32	779	0.8	0	80	19	1	0	10	88.4	0
20:03:00	42	21	6.0	2.0	0.68	1	25.4	25.2	100	32	779	0.8	0	70	19	1	0	7	89.8	0
20:02:00	42	22	7.0	1.7	0.88	1	23.5	23.1	100	32	780	0.8	0	169	41	2	0	7	78.7	0
20:01:00	42	22	6.0	2.0	0.58	1	22.7	22.4	100	32	778	0.8	0	130	33	2	0	11	92.2	0
20:00:00	42	21	5.0	1.9	0.64	1	19.5	19.3	100	31	779	0.8	0	100	22	1	0	5	88.2	0
19:59:00	42	22	7.0	2.0	0.65	1	20.8	20.5	100	31	779	0.8	0	119	34	2	0	6	68.5	0

Status of new LINUX120 Server and ZVM001 system before new App Starts

v1.0.2.9 Welcome

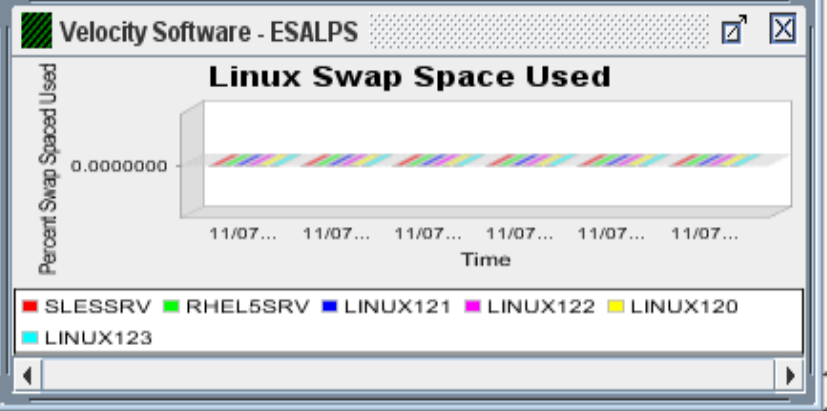
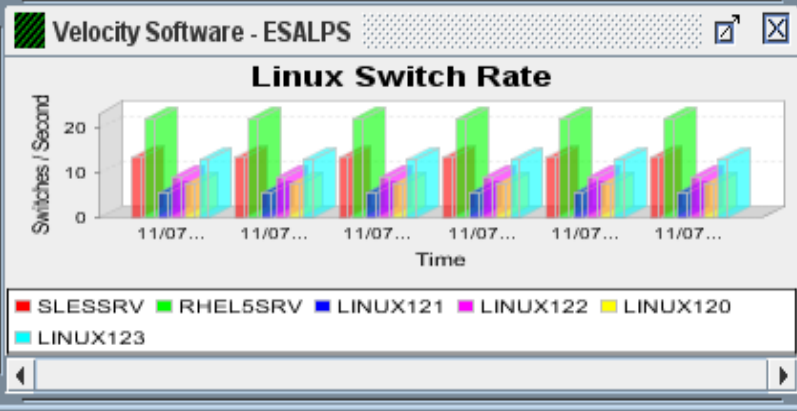
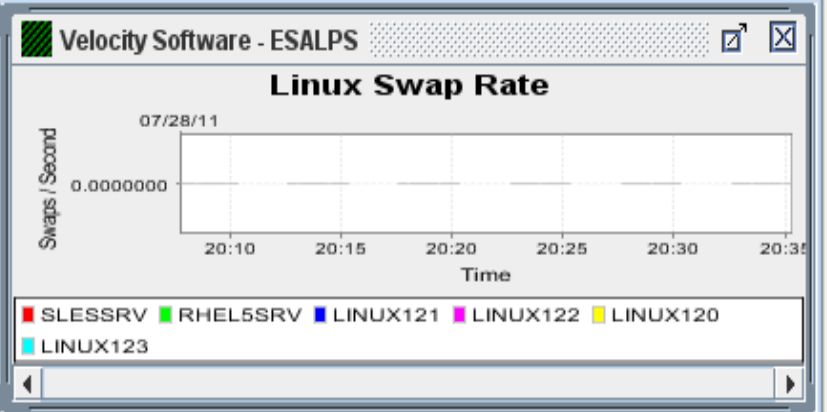
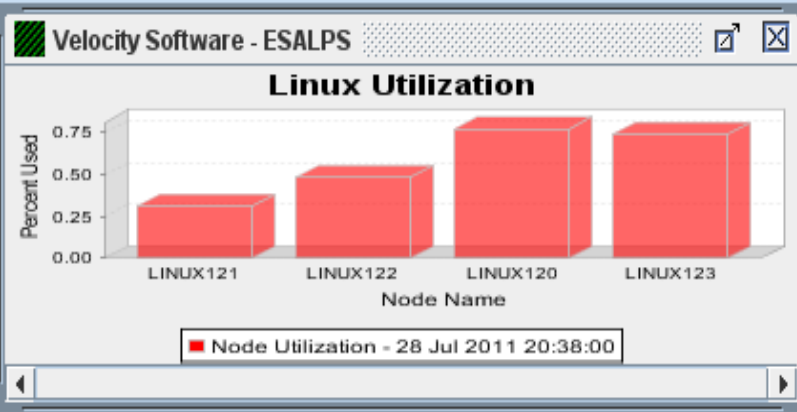


zVIEW - CA TECHNOLOGIES - ZVM001 (ZVM001) Graphical Performance Displays for z/VM and Linux on System z

- Graphs
- ESAMGMT
- ESAHDR
- ESAMAIN
- SLA
- USER
- ESUSR2
- SFS
- PROCESSOR
- STORAGE
- ESASTRI
- PAGING
- ESABLKP
- ESAPSDV
- I/O
- TCPIP
- ESAEMENU
- ESASUM
- ESAOPER
- LINUX
- ESALNXA
- ESALNXC
- ESALNXP
- ESAHST2
- ESAUCD2
- ESAVMENU

System User Linux Storage I/O Paging Network Views Tools Help Auto arrange

Overall CPU Linux Summary



ESAUSTR2**Service machine resource utilization by
Class & Userid**

VIEW - CA TECHNOLOGIES - ZVM001 (ZVM001)
ESAUSTR2 - User Resource Utilization

Close Window

Pause Updates

Graphs

Time	UserID /Class	<---CPU time-->			<-----Main Storage (pages)----->						<-----Paging (pages)----->				<Spooling(pages)>				
		<(seconds)>	T:V	<Resident>	Lock	<-----WSS----->		<---Allocated--->		<---I/O--->		<---I/O--->							
		Total	Virt	Rat	Total	Activ	-ed	Total	Actv	Avg	Resrvd	Total	ExStg	Disk	Read	Write	Alloc	Read	Write
20:38:00	System:	1.53	1.47	1.0	196K	196K	1331	197K	195K	4641	0	143K	0	143K	5	0	1437	0	0
20:38:00	*Servers	0.00	0.00	1.3	163	107	5	1147	105	9	0	10004	0	10004	0	0	405	0	0
20:38:00	*TheUsrs	0.09	0.08	1.2	2370	2335	11	2927	2219	106	0	12804	0	12804	3	0	982	0	0
20:38:00	KeyUser	0.04	0.02	2.0	1342	1340	554	790	788	158	0	5740	0	5740	2	0	34	0	0
20:38:00	RHELSSRV	0.74	0.73	1.0	102K	102K	380	102K	102K	51K	0	87208	0	87208	0	0	7	0	0
20:38:00	SLESSRV	0.65	0.64	1.0	90420	90420	381	90026	90K	45K	0	26787	0	26787	0	0	9	0	0



+ IO

+ TCPIP

+ ESAEMENU

ESASUM

ESAOPER

+ LINUX

ESALNXA

ESALNXC

ESALNXP

ESAHST2

ESAUCD2

+ ESAVMENU

ESAHST2
Linux Host Storage Analysis



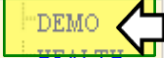
VIEW - CA TECHNOLOGIES - ZVM001 (ZVM001)
ESAHST2 - LINUX HOST Storage Analysis Report

Close Window

Pause Updates

- ESASTRI
- + PAGING
 - ESABLKP
 - ESAPSDV
- + I/O
- + TCP/IP
- + ESAEMENU
 - ESASUM
 - ESAOPER
- + LINUX
 - ESALNXA
 - ESALNXC
 - ESALNXP
 - ESAHST2
 - ESAUCD2
- + ESAVMENU
- + INDEX
- + EMULATION
 - ESATUNE
- + ALERTS
 - DEMO
 - HEALTH
- + VSI Add-ons
- Help
- Parameters
- Archives

Time	Server	Index	<-Utilization->			Errors	<-----Storage----->	
			<MegaByte> Size	Used	Pct Full		Alloc Units	Description
20:40:00	LINUX123	6	2273	1653	72.7	0	4096	/usr
20:40:00	LINUX123	4	2273	838	36.9	0	4096	/
20:40:00	LINUX123	3	42	0	0	0	1024	Swap Space
20:40:00	LINUX123	2	499	312	62.4	0	1024	Real Memory
20:40:00	LINUX123	1	499	22	4.3	0	1024	Memory Buffers
20:40:00	LINUX120	7	2310	1533	66.4	0	4096	/usr
20:40:00	LINUX120	4	2310	856	37.1	0	4096	/
20:40:00	LINUX120	3	36	0	0	0	1024	Swap Space
20:40:00	LINUX120	2	493	228	46.2	0	1024	Real Memory
20:40:00	LINUX120	1	493	7	1.4	0	1024	Memory Buffers
20:40:00	LINUX122	6	2273	1566	68.9	0	4096	/usr
20:40:00	LINUX122	4	2273	662	29.1	0	4096	/
20:40:00	LINUX122	3	42	0	0	0	1024	Swap Space
20:40:00	LINUX122	2	499	299	59.9	0	1024	Real Memory
20:40:00	LINUX122	1	499	18	3.6	0	1024	Memory Buffers
20:40:00	LINUX121	7	2310	1956	84.7	0	4096	/usr
20:40:00	LINUX121	4	2310	836	36.2	0	4096	/
20:40:00	LINUX121	3	42	0	0	0	1024	Swap Space
20:40:00	LINUX121	2	492	79	16.0	0	1024	Real Memory
20:40:00	LINUX121	1	492	7	1.5	0	1024	Memory Buffers



Alerts Demo**User defined customized alerts**

Welcome

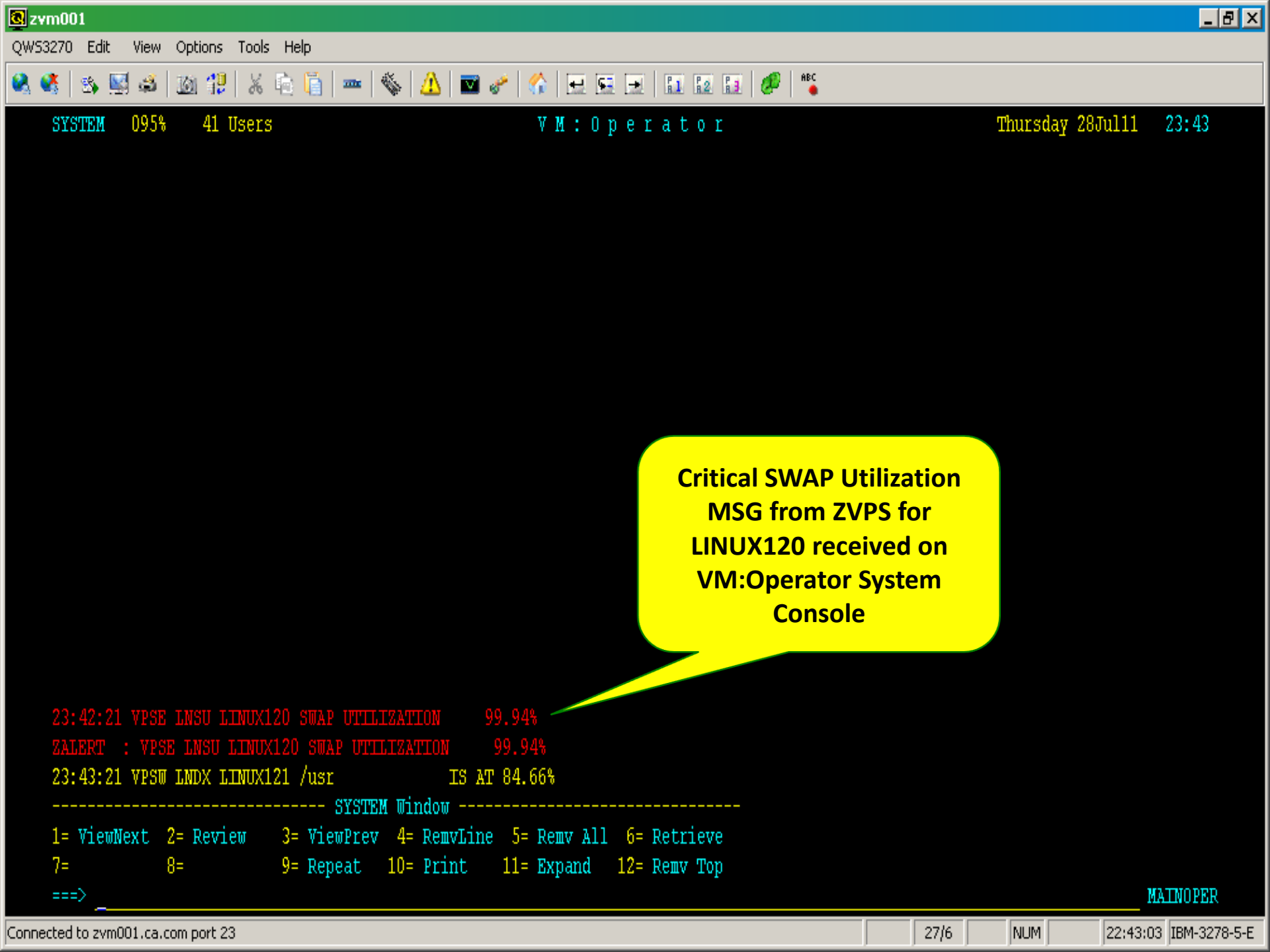
zVIEW - CA TECHNOLOGIES - ZVM001 (ZVM001)
DEMO - Exceptions Analysis Alerts - 11/07/28 at 20:47

Close Window Pause Updates

Code	Alert Description
LNDX	/usr area on LINUX121 is 84.66% full

Navigation menu (left):

- ESASTRI
- + PAGING
 - ESABLKP
 - ESAPSDV
- + I/O
- + TCPIP
- + ESAEMENU
 - ESASUM
 - ESAOPER
- + LINUX
 - ESALNXA
 - ESALNXC
 - ESALNXP
 - ESAHST2
 - ESAUCD2
- + ESAVMENU
- + INDEX
- + EMULATION
 - ESATUNE
- + ALERTS
 - DEMO
 - HEALTH
- + VSI Add-ons
 - Help
 - Parameters
- Archives



SYSTEM 095% 41 Users

VM:Operator

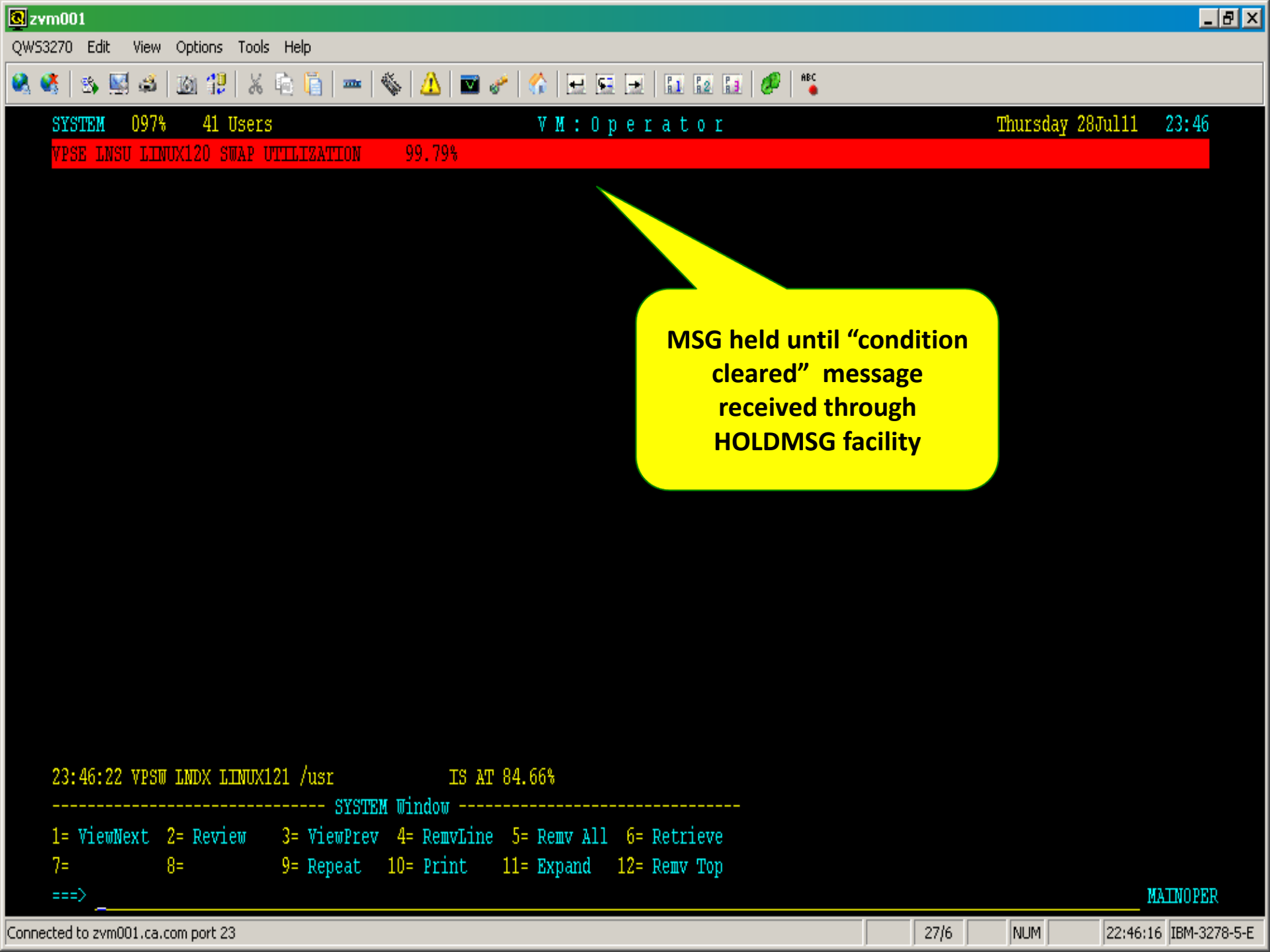
Thursday 28Jul11 23:43

**Critical SWAP Utilization
MSG from ZVPS for
LINUX120 received on
VM:Operator System
Console**

23:42:21 VPSE LNSU LINUX120 SWAP UTILIZATION 99.94%
ZALERT : VPSE LNSU LINUX120 SWAP UTILIZATION 99.94%
23:43:21 VPSW LNDX LINUX121 /usr IS AT 84.66%

----- SYSTEM Window -----
1= ViewNext 2= Review 3= ViewPrev 4= RemvLine 5= Remv All 6= Retrieve
7= 8= 9= Repeat 10= Print 11= Expand 12= Remv Top
==>

MAINOPER



SYSTEM 097% 41 Users VM: Operator Thursday 28Jul11 23:46
VPSE LNSU LINUX120 SWAP UTILIZATION 99.79%

MSG held until "condition cleared" message received through HOLDMSG facility

23:46:22 VPSW LNDX LINUX121 /usr IS AT 84.66%
----- SYSTEM Window -----
1= ViewNext 2= Review 3= ViewPrev 4= RemvLine 5= Remv All 6= Retrieve
7= 8= 9= Repeat 10= Print 11= Expand 12= Remv Top
==>

MAINOPER

Investigation Begins after SWAP alert received

v1.0.2.9

Welcome



zVIEW - CA TECHNOLOGIES - ZVM001 (ZVM001)

Graphical Performance Displays for z/VM and Linux on System z

Graphs

System User Linux Storage I/O Paging Network Views Tools

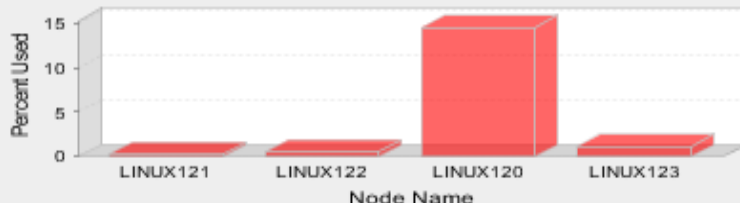
Help Auto arrange

Overall CPU

Linux Summary

Velocity Software - ESALPS

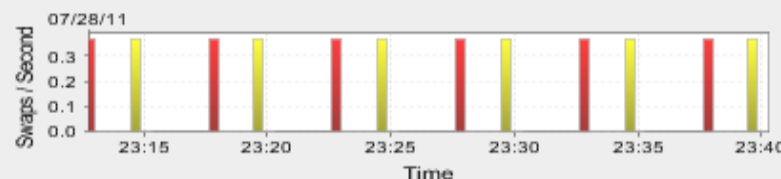
Linux Utilization



Node Utilization - 28 Jul 2011 23:43:00

Velocity Software - ESALPS

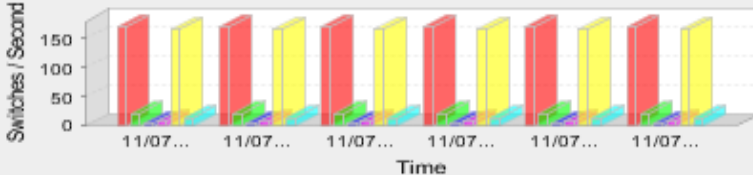
Linux Swap Rate



SLESSRV RHEL5SRV LINUX121 LINUX122 LINUX120 LINUX123

Velocity Software - ESALPS

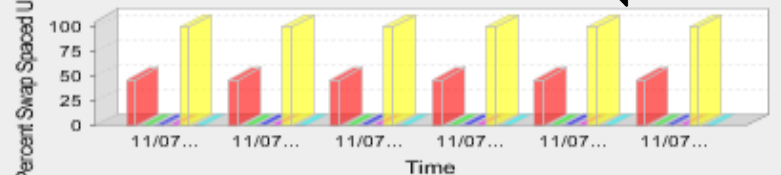
Linux Switch Rate



SLESSRV RHEL5SRV LINUX121 LINUX122 LINUX120 LINUX123

Velocity Software - ESALPS

Linux Swap Space Used



SLESSRV RHEL5SRV LINUX121 LINUX122 LINUX120 LINUX123

- ESAMGMT
- ESAHDR
- ESAMAIN
- SLA
- USER
- ESUSR2
- SFS
- PROCESSOR
- STORAGE
- ESASTR1
- PAGING
- ESABLKP
- ESAPSDV
- I/O
- TCPIP
- ESAEMENU
- ESASUM
- ESAOPER
- LINUX
- ESALNXA
- ESALNXC
- ESALNXP
- ESAHST2
- ESAUCD2
- ESAVMENU



ESAHST2

Details on Storage utilization

Welcome



zVIEW - CA TECHNOLOGIES - ZVM001 (ZVM001)
ESAHST2 - LINUX HOST Storage Analysis Report

Close Window

Pause Updates

Graphs

- ESAMGMT
- ESAHDR
- ESAMAIN
- + SLA
- + USER
 - ESAUSTR2
- + SFS
- + PROCESSOR
- + STORAGE
 - ESASTR1
- + PAGING
 - ESABLPK
 - ESAPSDV
- + IO
- + TCPIP
- + ESAEMENU
- ESASUM
- ESAOPEP
- + LINUX
 - ESALNXA
 - ESALNXC
 - ESALNXP
 - ESAHST2
 - ESAUCD2
- + ESAVMENU

Time	Server	Index	<-Utilization->			Errors	<-----Storage----->	
			Size	Used	Full		Alloc	Description
			<MegaByte>					
23:44:00	LINUX123	6	2273	1653	72.7	0	4096	/usr
23:44:00	LINUX123	4	2273	839	36.9	0	4096	/
23:44:00	LINUX123	3	42	0	0	0	1024	Swap Space
23:44:00	LINUX123	2	499	329	66.0	0	1024	Real Memory
23:44:00	LINUX123	1	499	25	5.1	0	1024	Memory Buffers
23:44:00	LINUX120	7	2310	1533	66.4	0	4096	/usr
23:44:00	LINUX120	4	2310	860	37.2	0	4096	/
23:44:00	LINUX120	3	36	36	99.9	0	1024	Swap Space
23:44:00	LINUX120	2	493	488	99.0	0	1024	Real Memory
23:44:00	LINUX120	1	493	2	0.5	0	1024	Memory Buffers
23:44:00	LINUX122	6	2273	1566	68.9	0	4096	/usr
23:44:00	LINUX122	4	2273	662	29.1	0	4096	/
23:44:00	LINUX122	3	42	0	0	0	1024	Swap Space
23:44:00	LINUX122	2	499	303	60.7	0	1024	Real Memory
23:44:00	LINUX122	1	499	21	4.3	0	1024	Memory Buffers
23:44:00	LINUX121	7	2310	1956	84.7	0	4096	/usr
23:44:00	LINUX121	4	2310	836	36.2	0	4096	/
23:44:00	LINUX121	3	42	0	0	0	1024	Swap Space
23:44:00	LINUX121	2	492	85	17.3	0	1024	Real Memory
23:44:00	LINUX121	1	492	13	2.7	0	1024	Memory Buffers

Alert Confirmed



ESALNXP

Linux process resource consumption – based on defined threshold

VIEW - CA TECHNOLOGIES - ZVM001 (ZVM001)
ESALNXP - LINUX VSI Process Statistics Report

Close Window

Pause Updates

	Time	Node	Name	ID	PPID	GRP	Total	sys	user	syst	usrst	nice value	Total	sys	user	syst	usrst	<Stg (k)> Size	RSS	<--Fau min	
STORAGE																					
ESASTRI																					
PAGING																					
ESABLPK	23:44:00	LINUX123	mysqld	1392	1345	1314	0.2	0.0	0.2	0	0	0	0.1	0.0	0.1	0	0	162K	24K	0	
ESAPSDV	23:44:00	LINUX123	snmpd	1139	1	1138	0.5	0.4	0.2	0	0	-10	0.3	0.2	0.1	0	0	70K	6800	51	
IO																					
Totals	23:44:00	LINUX123		0	0	0	0.9	0.5	0.4	0	0	0	0.5	0.3	0.2	0	0	1M	150K	52	
TCPIP																					
sshhd	23:44:00	LINUX120	sshhd	1725	1722	1722	0.3	0.2	0.1	0	0	0	0.2	0.1	0.1	0	0	9911	2048	0	
ESAEEMENU																					
sshhd	23:44:00	LINUX120	sshhd	1673	1670	1670	0.4	0.3	0.1	0	0	0	0.3	0.2	0.1	0	0	10K	2120	0	
ESASUM	23:44:00	LINUX120	java	1658	1	1648	10.1	1.2	8.9	0	0	0	6.0	0.7	5.3	0	0	638K	309K	1	
ESAOPEP	23:44:00	LINUX120	mysqld-m	1288	1204	1163	2.7	1.5	1.2	0	0	0	1.6	0.9	0.7	0	0	546K	80K	1	
LINUX																					
snmpd	23:44:00	LINUX120	snmpd	1144	1	1143	0.4	0.3	0.1	0	0	-10	0.3	0.2	0.1	0	0	6295	3372	47	
ESALNXA	23:44:00	LINUX120	kswapd0	66	1	1	0.2	0.2	0	0	0	0	0.1	0.1	0	0	0	0	0	0	
ESALNXC	23:44:00	LINUX120	*Totals*	0	0	0	14.2	3.8	10.4	0	0	0	8.4	2.2	6	0	0	2M	475K	49	
ESALNXP	23:44:00	LINUX122	snmpd	1216	1	1215	0.5	0.4	0.2	0	0	-10	0.3	0.2	0.1	0	0	69K	5636	43	
ESAHST2	23:44:00	LINUX122	*Totals*	0	0	0	0.6	0.4	0.2	0	0	0	0.3	0.2	0.1	0	0	597K	60K	43	
ESAHST2	23:44:00	LINUX121	snmpd	1100	1	1099	0.3	0.3	0.1	0	0	-10	0.2	0.0	0.0	0	0	13K	6744	15	
ESAUCD2	23:44:00	LINUX121	*Totals*	0	0	0	0.3	0.3	0.1	0	0	0	0.2	0.0	0.0	0	0	212K	36K	15	
ESAVMENU	23:43:00	LINUX123	usl	2931	2896	2931	0	0	0	0	0	0	0.1	0	0	0	0	15K	4400	33	
INDEX	23:43:00	LINUX123	mysqld	1392	1345	1314	0	0	0	0	0	0	0.1	0	0	0	0	162K	24K	0	
EMULATION	23:43:00	LINUX123	snmpd	1139	1	1138	0	0	0	0	0	0	0.1	0	0	0	0	70K	6800	51	
ESATUNE	23:43:00	LINUX123	*Totals*	0	0	0	1	0	0	0	0	0	0.3	0	0	0	0	1M	150K	84	
ALERTS	23:43:00	LINUX120	sshhd	1725	1722	1722	0	0	0	0	0	0	0.1	0	0	0	0	9911	2048	0	
DEMO	23:43:00	LINUX120	sshhd	1673	1670	1670	0	0	0	0	0	0	0.1	0	0	0	0	10K	2120	0	
HEALTH	23:43:00	LINUX120	java	1658	1	1648	9.8	1.2	8.6	0	0	0	6.0	0.7	5.0	0	0	638K	309K	2	
VSI Add-ons	23:43:00	LINUX120	mysqld-m	1288	1204	1163	3.5	2.0	1.5	0	0	0	2.1	1.2	0.9	0	0	546K	80K	1	
Help	23:43:00	LINUX120	snmpd	1144	1	1143	0.4	0.3	0.1	0	0	-10	0.2	0.2	0.1	0	0	6295	3624	46	
Parameters	23:43:00	LINUX120	*Totals*	0	0	0	14.5	4.3	10.2	0	0	0	8.7	2.5	6.1	0	0	2M	478K	49	
	23:43:00	LINUX122	snmpd	1216	1	1215	0.5	0.4	0.1	0	0	-10	0.3	0.2	0.1	0	0	69K	5636	43	
	23:43:00	LINUX122	*Totals*	0	0	0	0.5	0.4	0.1	0	0	0	0.3	0.2	0.1	0	0	597K	60K	43	

LINUX120 process storage sizes captured

ESALNXC

**Linux process details – Requires Velocity
Software NETSNMP**



Live Search



V1.0.215

welcome

VELOCITY SOFTWARE ZEW - CA TECHNOLOGIES - ZVM001 (ZVM001)
ESALNXC - Linux Process Configuration

Close Window

Pause Updates

	Node	Lvl	PPID	PID	Process	Path	Parms	UsrMem(K)	RSS	User	Group
STORAGE											
ESASTRI											
PAGING											
ESABKLP	LINUX120	2	1	1129	slpd			0	0	root	
ESAPSDV	LINUX120	2	1	1134	syslog-n			0	0	root	
	LINUX120	2	1	1139	syslog-n			0	0	root	
IO											
klogd	LINUX120	2	1	1142	klogd			0	0	root	
TCPIP											
snmpd	LINUX120	2	1	1144	snmpd			6295	3372	root	
ESAEMENU											
snmpd	LINUX120	2	1	1152	snmpd			0	0	root	
ESASUM											
portmap	LINUX120	2	1	1154	portmap			0	0	root	
ESAOPER											
nmbd	LINUX120	2	1	1188	nmbd			0	0	root	
LINUX											
mysql	LINUX120	2	1	1204	mysqld_s			0	0	root	
mysql DB	LINUX120	3	1204	1288	mysqld-m			545687	79536	root	
nfsd	LINUX120	2	1	1235	nfsd			0	0	root	
nfsd	LINUX120	2	1	1236	nfsd			0	0	root	
nfsd	LINUX120	2	1	1237	nfsd			0	0	root	
nfsd	LINUX120	2	1	1238	nfsd			0	0	root	
lockd	LINUX120	2	1	1240	lockd			0	0	root	
rpc.moun	LINUX120	2	1	1245	rpc.moun			0	0	root	
INDEX											
nscd	LINUX120	2	1	1267	nscd			0	0	root	
EMULATION											
zmd	LINUX120	2	1	1268	zmd			0	0	root	
ESATUNE											
zmd	LINUX120	2	1	1286	zmd			80183	14036	root	
ALERTS											
nscd	LINUX120	2	1	1294	nscd			0	0	root	
nscd	LINUX120	2	1	1304	nscd			0	0	root	
master	LINUX120	2	1	1335	master			0	0	root	
VSI Add-ons											
pickup	LINUX120	3	1335	1347	pickup			0	0	root	
qmgr	LINUX120	3	1335	1348	qmgr			0	0	root	
sshd	LINUX120	2	1	1351	sshd			0	0	root	
sshd	LINUX120	2	1	1362	sshd			0	0	root	
sshd	LINUX120	3	1362	2072	sshd			0	0	root	
hash	LINUX120	4	2072	2075	hash			0	0	root	

**New App mysql DB
processes**

ESALNXC

**Linux process details – Requires Velocity
Software NETSNMP**



Live Search



V1.0.2

welcome

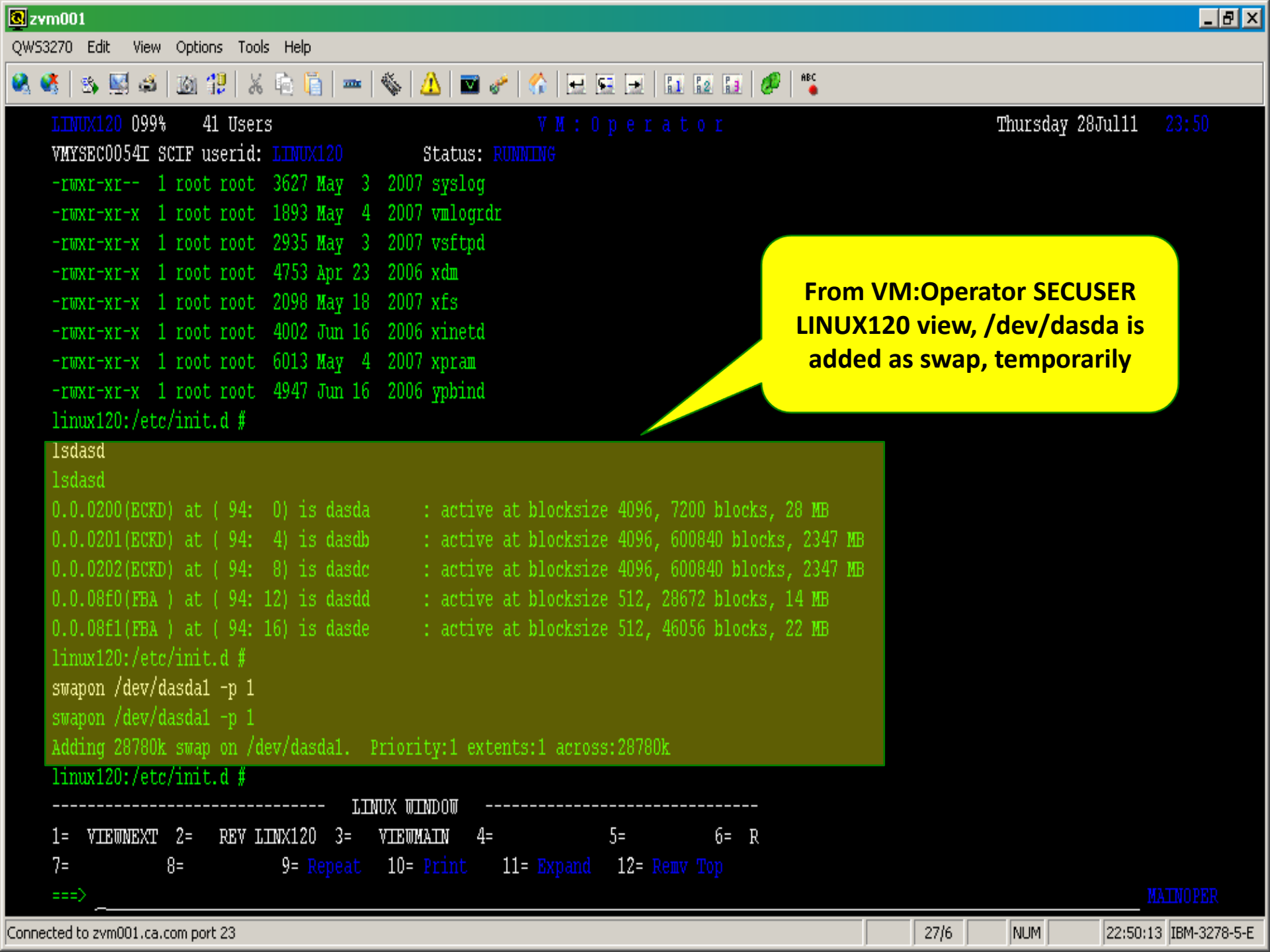
VELOCITY SOFTWARE **NEW - CA TECHNOLOGIES - ZVM001 (ZVM001)**
ESALNXC - Linux Process Configuration

Close Window

Pause Updates

	Node	Lvl	PPID	PID	Process	Path	Parms	UsrMem(K)	RSS	User	Group
STORAGE											
ESASTRI											
PAGING											
ESABLPK	LINUX120	3	1444	1444	httpd2-p			0	0	root	
ESAPSDV	LINUX120	3	1444	1446	httpd2-p			0	0	root	
ESAPSDV	LINUX120	3	1444	1447	httpd2-p			0	0	root	
IO											
ESAPSDV	LINUX120	3	1444	1449	httpd2-p			0	0	root	
TCPIP											
ESAPSDV	LINUX120	3	1444	1672	httpd2-p			0	0	root	
ESAEMENU											
ESASUM	LINUX120	3	1444	1687	httpd2-p			0	0	root	
ESASUM	LINUX120	3	1444	1689	httpd2-p			0	0	root	
ESAOPER	LINUX120	3	1444	1693	httpd2-p			0	0	root	
LINUX											
ESALNXA	LINUX120	3	1444	1720	httpd2-p			0	0	root	
ESALNXC	LINUX120	3	1444	1721	httpd2-p			0	0	root	
ESALNXP	LINUX120	2	1	1454	httpd2-p			0	0	root	
ESALNXP	LINUX120	2	1	1457	login			0	0	root	
ESAHST2	LINUX120	3	1457	1466	bash			0	0	root	
ESAUCD2	LINUX120	2	1	1512	bash			0	0	root	
ESAUCD2	LINUX120	2	1	1658	java			638472	308588	root	
ESAVMENU	LINUX120	2	1	1715	java			0	0	root	
ESAVMENU	LINUX120	2	1	1773	java			0	0	root	
INDEX											
ESAVMENU	LINUX120	2	1	1864	rc			0	0	root	
EMULATION											
ESATUNE	LINUX120	3	1864	1878	startpar			0	0	root	
ALERTS											
ESATUNE	LINUX120	2	1	2403	rc			0	0	root	
DEMO	LINUX120	3	2403	2418	startpar			0	0	root	
HEALTH	LINUX120	2	1	2415	blogd			0	0	root	
VSI Add-ons											
HEALTH	LINUX120	1	1195	1254	mysqld-m			0	0	root	
HEALTH	LINUX120	1	1203	1290	mysqld-m			0	0	root	
HEALTH	LINUX120	1	1928	1929	bash			0	0	root	
HEALTH	LINUX120	2	1929	2008	usl			0	0	root	
HEALTH	LINUX121	1	1	1	init	init_5_		0	0	root	root
HEALTH	LINUX121	2	1	2	migratio	migratio		0	0	root	root

**New App java
Processes**

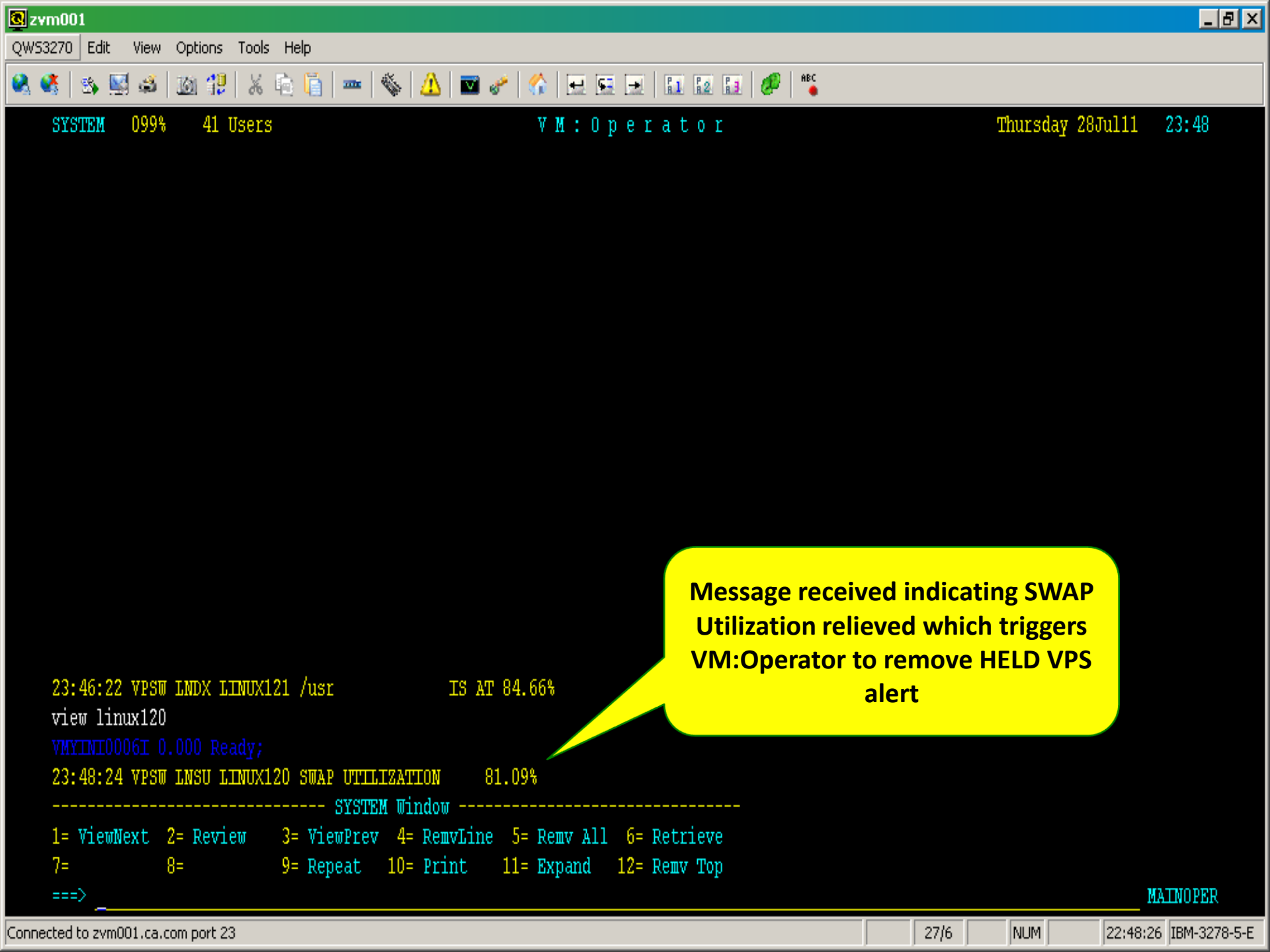


From VM:Operator SECUSER
LINUX120 view, /dev/dasda is
added as swap, temporarily

```
lsdasd
lsdasd
0.0.0200(ECKD) at ( 94: 0) is dasda      : active at blocksize 4096, 7200 blocks, 28 MB
0.0.0201(ECKD) at ( 94: 4) is dasdb      : active at blocksize 4096, 600840 blocks, 2347 MB
0.0.0202(ECKD) at ( 94: 8) is dasdc      : active at blocksize 4096, 600840 blocks, 2347 MB
0.0.08f0(FBA ) at ( 94: 12) is dasdd     : active at blocksize 512, 28672 blocks, 14 MB
0.0.08f1(FBA ) at ( 94: 16) is dasde     : active at blocksize 512, 46056 blocks, 22 MB
linux120:/etc/init.d #
swapon /dev/dasda1 -p 1
swapon /dev/dasda1 -p 1
Adding 28780k swap on /dev/dasda1. Priority:1 extents:1 across:28780k
linux120:/etc/init.d #
```

```
----- LINUX WINDOW -----
1= VIEWNEXT 2= REV LINUX120 3= VIEWMAIN 4= 5= 6= R
7= 8= 9= Repeat 10= Print 11= Expand 12= Remv Top
===>
```

MAINOPER



Message received indicating SWAP Utilization relieved which triggers VM:Operator to remove HELD VPS alert

23:46:22 VPSW LNDX LINUX121 /usr IS AT 84.66%

view linux120

VMYINI0006I 0.000 Ready;

23:48:24 VPSW LMSU LINUX120 SWAP UTILIZATION 81.09%

----- SYSTEM Window -----

1= ViewNext 2= Review 3= ViewPrev 4= RemvLine 5= Remv All 6= Retrieve
7= 8= 9= Repeat 10= Print 11= Expand 12= Remv Top

===>

MAINOPER

ESALNXC

**Linux process details – Requires Velocity
Software NETSNMP**

VELOCITY SOFTWARE VMEW - CA TECHNOLOGIES - ZVM001 (ZVM001)
ESALNXC - Linux Process Configuration

Close Window Pause Updates

	Node	Lvl	PPID	PID	Process	Path	Parms	UsrMem(K)	RSS	User	Group
STORAGE											
ESASTRI											
PAGING											
ESABLPK	LINUX120	3	1444	1444	httpd2-p			0	0	root	
ESAPSDV	LINUX120	3	1444	1446	httpd2-p			0	0	root	
ESAPSDV	LINUX120	3	1444	1447	httpd2-p			0	0	root	
IO											
ESAPSDV	LINUX120	3	1444	1449	httpd2-p			0	0	root	
TCPIP											
ESAPSDV	LINUX120	3	1444	1672	httpd2-p			0	0	root	
ESAEMENU											
ESASUM	LINUX120	3	1444	1687	httpd2-p			0	0	root	
ESASUM	LINUX120	3	1444	1689	httpd2-p			0	0	root	
ESASUM	LINUX120	3	1444	1693	httpd2-p			0	0	root	
LINUX											
ESALNXC	LINUX120	3	1444	1720	httpd2-p			0	0	root	
ESALNXC	LINUX120	3	1444	1721	httpd2-p			0	0	root	
ESALNXC	LINUX120	2	1	1454	httpd2-p			0	0	root	
ESALNXC	LINUX120	2	1	1457	login			0	0	root	
ESAHST2	LINUX120	3	1457	1466	bash			0	0	root	
ESAHST2	LINUX120	2	1	1512	bash			0	0	root	
ESAUCD2	LINUX120	2	1	1658	java			638472	308588	root	
ESAVMENU	LINUX120	2	1	1715	java			0	0	root	
INDEX											
ESAVMENU	LINUX120	2	1	1773	java			0	0	root	
EMULATION											
ESATUNE	LINUX120	2	1	1864	rc			0	0	root	
ESATUNE	LINUX120	3	1864	1878	startpar			0	0	root	
ALERTS											
ESATUNE	LINUX120	2	1	2403	rc			0	0	root	
ESATUNE	LINUX120	3	2403	2418	startpar			0	0	root	
HEALTH	LINUX120	2	1	2415	blogd			0	0	root	
VSI Add-ons											
HEALTH	LINUX120	1	1195	1254	mysqld-m			0	0	root	
HEALTH	LINUX120	1	1203	1290	mysqld-m			0	0	root	
HEALTH	LINUX120	1	1928	1929	bash			0	0	root	
HEALTH	LINUX120	2	1929	2008	usl			0	0	root	
HEALTH	LINUX121	1	1	1	init	init_5_		0	0	root	root
HEALTH	LINUX121	2	1	2	migratio	migratio		0	0	root	root

ESALNXC

Linux process details – Requires Velocity Software NETSNMP



VELOCITY SOFTWARE ESALHST2 - LINUX HOST Storage Analysis Report

Close Window

Pause Updates

- ESASTRI
- + PAGING
 - ESABLKP
 - ESAPSDV
- + I/O
- + TCP/IP
- + ESAEMENU
 - ESASUM
 - ESAOPER
- + LINUX
 - ESALNXA
 - ESALNXC
 - ESALNXP
 - ESAHST2
 - ESAUCD2
- + ESAVMENU
- + INDEX
- + EMULATION
 - ESATUNE
- + ALERTS
 - DEMO
 - HEALTH
- + VSI Add-ons
- Help
- Parameters

Time	Server	Index	<-Utilization->			Errors	<-----Storage----->	
			<MegaByte> Size	Used	Pct Full		Alloc Units	Description
23:53:00	LINUX123	6	2273	1653	72.7	0	4096	/usr
23:53:00	LINUX123	4	2273	839	36.9	0	4096	/
23:53:00	LINUX123	3	42	0	0	0	1024	Swap Space
23:53:00	LINUX123	2	499	329	66.0	0	1024	Real Memory
23:53:00	LINUX123	1	499	25	5.1	0	1024	Memory Buffers
23:53:00	LINUX120	7	2310	1533	66.4	0	4096	/usr
23:53:00	LINUX120	3	65	43	65.9	0	1024	Swap Space
23:53:00	LINUX120	2	493	477	96.8	0	1024	Real Memory
23:53:00	LINUX120	1	493	6	1.3	0	1024	Memory Buffers
23:53:00	LINUX122	6	2273	1566	68.9	0	4096	/usr
23:53:00	LINUX122	4	2273	662	29.1	0	4096	/
23:53:00	LINUX122	3	42	0	0	0	1024	Swap Space
23:53:00	LINUX122	2	499	304	60.8	0	1024	Real Memory
23:53:00	LINUX122	1	499	22	4.3	0	1024	Memory Buffers
23:53:00	LINUX121	7	2310	1956	84.7	0	4096	/usr
23:53:00	LINUX121	4	2310	836	36.2	0	4096	/
23:53:00	LINUX121	3	42	0	0	0	1024	Swap Space
23:53:00	LINUX121	2	492	86	17.4	0	1024	Real Memory
23:53:00	LINUX121	1	492	14	2.8	0	1024	Memory Buffers

ESAHST2
Confirms relief after adding temporary SWAP space, dynamically

Archives

Archives

Access to Historical reports (daily, weekly, and monthly)

VELOCITY SOFTWARE - CA TECHNOLOGIES - ZVM001 (ZVM001)
 List of available historical reports

Close Window

Graphs

Daily Reports

ESAMGMT	
ESAHDR	
ESAMAIN	
+ SLA	Thu 28 Jul 2011 (00:02:01)
+ USER	Wed 27 Jul 2011 (09:06:35)
+ SFS	Tue 26 Jul 2011 (00:00:35)
+ PROCESSOR	Mon 25 Jul 2011 (00:01:00)
+ STORAGE	Sun 24 Jul 2011 (00:03:31)
+ PAGING	Sat 23 Jul 2011 (00:03:31)
+ IO	Fri 22 Jul 2011 (00:00:20)
+ TCPIP	Thu 21 Jul 2011 (00:49:20)
+ ESAEMENU	Wed 20 Jul 2011 (00:02:30)
ESASUM	Tue 19 Jul 2011 (00:01:10)
ESAOPER	Mon 18 Jul 2011 (00:02:49)
+ LINUX	
+ ESAVMENU	
+ INDEX	
+ EMULATION	
ESATUNE	
+ ALERTS	
+ VSI Add-ons	

Weekly Reports (week beginning)

	10 Jul 2011
	3 Jul 2011
	26 Jun 2011
	12 Jun 2011
	5 Jun 2011
	29 May 2011

Archives
REPORTS

Use for root cause analysis and capacity planning for LINUX120

Example 2: WEB DB Server – DB Restore with UPSTREAM[®] for Linux on System z

Scenario – Web DB process fails on LINUX123 after overnight MYSQL Upgrade and resolution is to back out upgrade

- **UPSTREAM[®] for Linux on System z is used for server back ups**
 - Full Weekly; daily incremental with MERGE
 - MYSQL DB backup script (PREPROCESS) defined in UPSTREAM Backup policies for Preprocessing
 - mysqldump –uroot –plinux123 winestore –x > /DBbackup/winestore_backup.sql**
 - Restore performed from local server dump file – retain one copy on server
 - MYSQLD startup script modified to generate message to operator on successful start
- **VM:Operator**
 - HOLDMSG table used for zVPS Alerts
 - SENDMAIL exec triggered by VPSE PRER custom alert
 - SECUSER Windows for each Linux on System z server
- **zVPS[™] MONALERT file includes alert for process monitoring (snmpd.conf proc statement)**

```
# rocommunity: a SNMPv1/SNMPv2c read-only access community name
# arguments: community [default|hostname|network/bits] [oid]
```

```
rocommunity velocity
```

```
#####
```

```
# SECTION: Monitor Various Aspects of the Running Host
```

```
#
```

```
# The following check up on various aspects of a host.
```

```
# proc: Check for processes that should be running.
```

```
# proc NAME [MAX=0] [MIN=0]
```

```
#
```

```
# NAME: the name of the process to check for. It must match
# exactly (ie, http will not find httpd processes).
```

```
# MAX: the maximum number allowed to be running. Defaults to 0.
```

```
# MIN: the minimum number to be running. Defaults to 0.
```

```
#
```

```
# The results are reported in the prTable section of the UCD-SNMP-MIB tree
```

```
# Special Case: When the min and max numbers are both 0, it assumes
```

```
# you want a max of infinity and a min of 1.
```

```
proc snmpd 0 1
proc usdaemon 0 1
proc uscmd1 0 1
proc mysqld 0 1
proc vsftpd 0 1
```

SNMPD Configuration: MYSQLD is defined on server as a monitored process

```
# disk: Check for disk space usage of a partition.
```

```
# The agent can check the amount of available disk space, and make
# sure it is above a set limit.
```

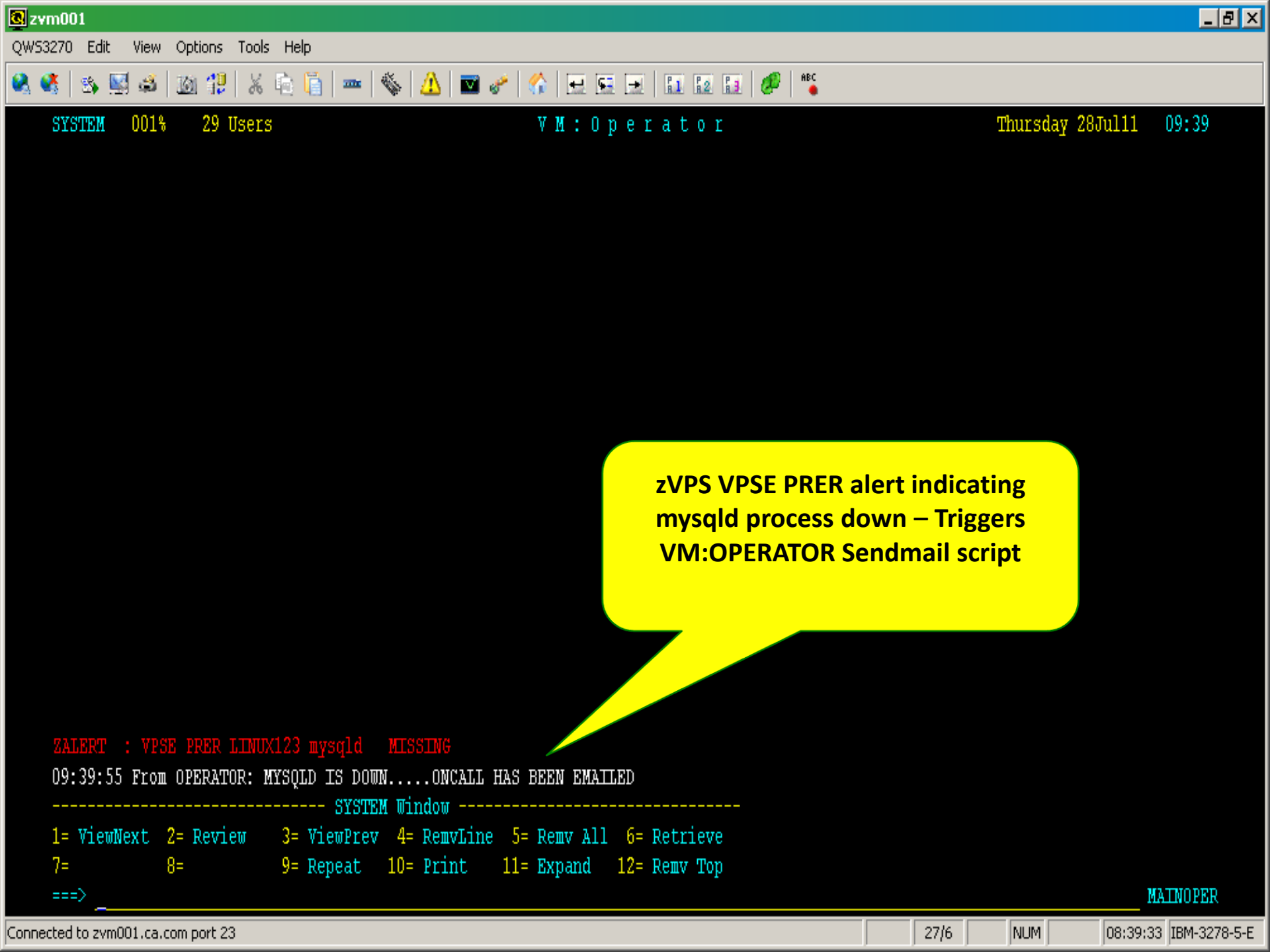
```
#
```

```
# disk PATH [MIN=100000]
```

```
#
```

```
# PATH: mount path to the disk in question.
```

```
# MIN: Disks with space below this value will have the Mib's errorFlag set.
```



**zVPS VPSE PRER alert indicating
mysqld process down – Triggers
VM:OPERATOR Sendmail script**

```
ZALERT : VPSE PRER LINUX123 mysqld MISSING  
09:39:55 From OPERATOR: MYSQLD IS DOWN.....ONCALL HAS BEEN EMAILED
```

```
----- SYSTEM Window -----  
1= ViewNext 2= Review 3= ViewPrev 4= RemvLine 5= Remv All 6= Retrieve  
7= 8= 9= Repeat 10= Print 11= Expand 12= Remv Top  
===>
```

MAINOPER

WEB DB Server – DB Restore with UPSTREAM

VM:Operator Automation: Alert generates email to Support

From: OPERATOR@ZVM001.CA.COM [mailto:OPERATOR@ZVM001.CA.COM]

Sent: Thursday, July 28, 2011 09:40 AM

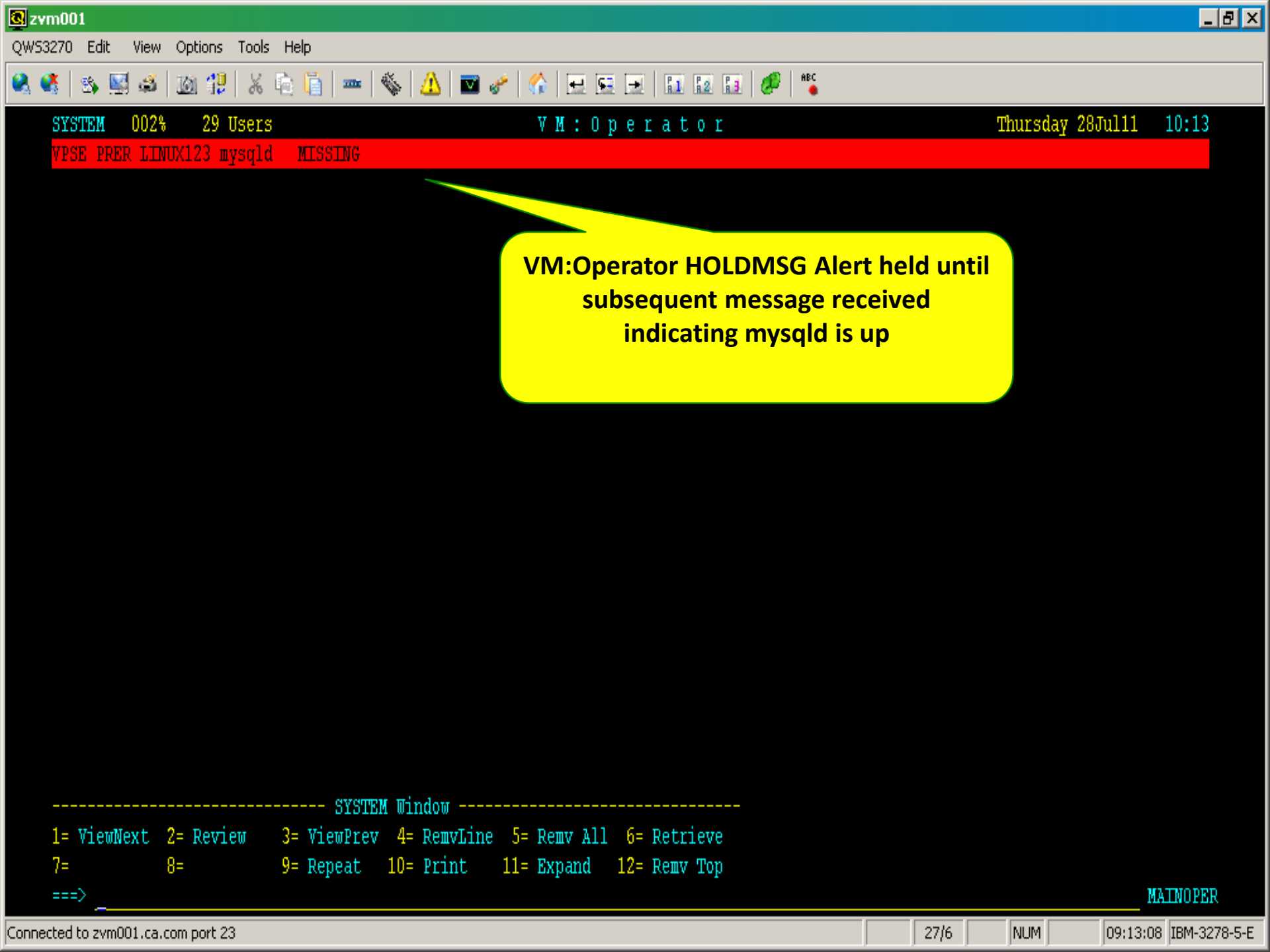
To: MYSQLD ONCALL

Subject: VPSE PRER LINUX123 mysqld MISSING

zVPS alert has been received (noted in SUBJECT) and needs immediate attention.

Contact Operations support and Service Desk for assistance or when condition has been corrected.

CA VM:Operator



VM:Operator HOLDMSG Alert held until subsequent message received indicating mysqld is up

SYSTEM 002% 29 Users VM:Operator Thursday 28Jul11 10:13

VPSE PRER LINUX123 mysqld MISSING

----- SYSTEM Window -----
1= ViewNext 2= Review 3= ViewPrev 4= RemvLine 5= Remv All 6= Retrieve
7= 8= 9= Repeat 10= Print 11= Expand 12= Remv Top
===>

MAINOPER

UPSTREAM® Director Java Interface

File Options View Help Window

Restore Backup Profiles Physical Restore Physical Backup SOS Management Host Reports Run Job Migration

i! Profile

Directory(s): My Backups

File(s):

Name	Size	Modified	Attribu
------	------	----------	---------

object(s): 0

Profile: Search Explore Snap Shot Collection Add Exclude Add directory

Add dir/w sub-dir Add file(s) Filter... Find... Refresh Specify restore to...

Target: (none) Profile: (none) Parameter file: 'Untitled' Action: Restore

Set profile to WEB DB Server
LINUX123



UPSTREAM® Director Java Interface

File Options View Help Window

Restore Backup Profiles Physical Restore Physical Backup SOS Management Host Reports Run Job Migration

LINUX123 - Version content(s): Back To Full

Directory(s):

- My Backups
- My Profile (LINUX123)
 - 2011 07/27 08:14:13 AM
 - 2011 07/26 09:08:39 AM
 - 2011 07/25 16:09:15 AM

Content(s) of: '2011 07/27 08:14:13 AM'

Name	Size	Modified	Attributes
(0)			

object(s): 1

Profile: LINUX123 Search Add Exclude Add directory Add dir/w sub-dir(s) Add file(s)

Filter... Find... Refresh Specify restore to...

Target: (none) Profile: LINUX123 Parameter file: 'Untitled' Action: Restore

UPSTREAM® Director Java Interface

File Options View Help Window



Restore Backup Profiles Physical Restore Physical Backup SOS Management Host Reports Run Job Migration

i!* Profile List - 5

i!* Profile 'LINUX123' Version '2011 07/27 08:14:13 AM' Specifications - 4

i!* LINUX123 - Version content(s): Back To Full

Directory(s):

My Backups

My Profile (LINUX123)

2011 07/27 08:14:13

()

DBbackup

bin

boot

dev

etc

home

lib

lib64

lost+found

media

misc

mnt

net

opt

proc

rmt

Content(s) of: 'DBbackup'

Name	Size	Modified
preprocess	98	2011 07/24 23:45:02 PM
winestore_backup.sql	497,366	2011 07/27 08:14:15 AM (1/3)

Target: (n/a)

Profile: (none)

Parameter file: (n/a)

Action: (n/a)

File Action Remote Management Security Physical

Inquire/Restore for Profile LINUX123 From 07/27/11 08:14:13 Back to Full

Search Spec....[*]

Restore To.....[

-Version Date- -Status/Size- -Version Date-

Files

07-27-11	08:14	Directory-->	-	-DBbackup
07-24-11	23:45		98	-preprocess
07-27-11	08:14		497366	-winestore_backup.sql
06-21-11	06:29	Directory-->	+	-bin
11-27-09	12:06	Directory-->	+	-boot
07-27-11	04:05	Directory-->	+	-dev
07-27-11	04:04	Directory-->	+	-etc
07-26-11	20:04	Directory-->	+	-home
06-20-11	20:52	Directory-->	+	-lib
06-24-11	04:03	Directory-->	+	-lib64
07-01-08	15:52	Directory-->	+	-lost+found

<	Select for Restore	>	<	Select All Dirs.	>
<	Collapse Dir.	>	<	Collapse All Dirs.	>
<Restore.. >	<Backups.. >	<	Exit	>	<
			More.. >	<	PlugIn.. >

Using: '/opt/fdrupstream/upstream.cfg' (TCP/IP Link)

**Access to UPSTREAM[®] functions
also available from server GUI**

UPSTREAM[®] Director Java Interface

File Options View Help Window

Restore Backup Profiles Physical Restore Physical Backup SOS Management Host Reports Run Job Migration

Profile List - 5

Profile '1 LINUX123' Version '2011 07/27 08:14:13 AM' Specifications - 4

LINUX123 - Version content(s): Back To Full

Directory(s):

My Backups

My Profile (LINUX123)

2011 07/27 08:14:13

()

DBbackup

bin

boot

dev

etc

home

lib

lib64

lost+found

media

misc

mnt

net

opt

proc

mnt

Content(s) of: 'DBbackup'

Name	Size	Modified
preprocess	98	2011 07/24 23:45:02 PM
winestore_backup.sql	497,366	2011 07/27 08:14:15 AM (1/3)

Target: (n/a)

Profile: (none)

Parameter file: (n/a)

Action: (n/a)

UPSTREAM[®] Director Java Interface

File Options View Help Window



Restore Backup Profiles Physical Restore Physical Backup SOS Management Host Reports Run Job Migration

i! LINUX123 - Version content(s): Back To Full

Directory(s):

My Backups

My Profile (LINUX123)

- 2011 07/27 08:14:13 AM
- 2011 07/26 09:08:39 AM
- 2011 07/25 16:09:15 PM

Content(s) of: '2011 07/27 08:14:13 AM'

Name	Size	Modified	Attributes
(0)			

(0)

object(s): 1

Profile: LINUX123

Search

Add Exclude

Add directory

Add dir/w sub-dir(s)

Add file(s)

Filter...

Find...

Refresh

Specify restore to...



Target: (none)

Profile: LINUX123

Parameter file: 'Untitled'

Action: Restore

UPSTREAM[®] Director Java Interface

File Options View Help Window



Restore Backup Profiles Physical Restore Physical Backup SOS Management Host Reports Run Job Migration

i! LINUX123 - Version content(s): Back To Full

Directory(s):

- My Backups
- My Profile (LINUX123)
 - 2011 07/27 08:14:1
 - 2011 07/26 09:08:3
 - ()
 - DBbackup
 - bin
 - boot
 - dev
 - etc
 - home
 - lib
 - lib64
 - lost+found
 - media

Content(s) of: 'DBbackup'

Name	Size	Modified	
preprocess	98	2011 07/24 23:45:02 PM	rw-r--r--
winestore_backup.sql	497,366	2011 07/26 09:08:43 AM (1/2)	rw-r--r--



Note Modified date on file

object(s): 2

file(s): 2, size: 497,464 (485KB) directory(s): 0

Profile: LINUX123

Search

Explore Snap Shot Collection

Add Exclude

Add directory

Add dir/w sub-dir(s)

Add file(s)

Filter...

Find...

Refresh

Specify restore to...

Target: (none)

Profile: LINUX123

Parameter file: 'Untitled'

Action: Restore

UPSTREAM[®] Director Java Interface

File Options View Help Window

Restore Backup Profiles Physical Restore Physical Backup SOS Management Host Reports Run Job Migration

Linux123 - Version content(s): Back To Full
Restore Object(s) - 1

Directory(s):

- My Backups
 - My Profile (LINUX123)
 - 2011 07/27 08:14:1
 - 2011 07/26 09:08:3
 - ()
 - DBbackup
 - bin
 - boot
 - dev
 - etc
 - home
 - lib
 - lib64
 - lost+found
 - media

Content(s) of: 'DBbackup'

Name	Size	Modified	
preprocess	98	2011 07/24 23:45:02 PM	rwxr-xr-
winestore_backup.sql	497,366	2011 07/26 09:08:43 AM (1/2)	rw-r--r--

object(s): 2 file(s): 2, size: 497,464 (485KB) directory(s): 0

Profile: LINUX123 Search Explore Snap Shot Collection Add Exclude Add directory

Add dir/w sub-dir(s) Add file(s) Filter... Find... Refresh Specify restore to...

Target: (none) Profile: LINUX123 Parameter file: 'Untitled' Action: Restore

UPSTREAM® Director Java Interface

File Options View Help Window

Restore Backup Profiles Physical Restore Physical Backup SOS Management Host Reports Run Job Migration

Restore Object(s) - 1

Files MS SQL Databases Exchange Server Windows Snapshot

Name	Restore to	Subdirs	Options	Date
/DBbackup/winestore_backup...	/DBbackup/winestore_backup...		Include	2011 07/26 09:0

Directory(s) only
Only directories and no files are restored

Fail on error
Error causes entire restore to end

Hardlink Support

Default by Operating System

Yes - Use support

No - Don't use support

Effectively restores only one copy of a file

Migrated Files Options

Restore includes migrated f

Restore only migrated fil

Remove stubs files with

General Windows Novell Options Lotus Notes R5/6 UNIX Options Date Limits

Remove Select all New Save Save as... Individual file options

Target: Browse... Monitor... Options... Start restore

Target: LINUX123.CA.COM (-) Pro LINUX123 Parameter file: tiled' Action: Restore

Non-platform specific restore options

Pre process:

Post process:

Process failed:

Wait For Job - Issue Wait Complete Message

Time (in milliseconds):

Kill job when time expires - Issue message

Send job output (stdout, stderr) to UPSTREAM log

Jobs

- Local Backup
- Mail Notification
- Miscellaneous
- Novell
- Windows
- Priority
- Replace
- Reporting
- Restart
- Route Via Host
- Server Signon
- Trace
- Translation
- ULTra

Target: LINUX123.CA.COM

Ok Cancel

Monitor... Options... Start restore

Specify any pre or post processing that you desire (i.e., shutdown application or DB)



UPSTREAM® Director Java Interface

File Options View Help Window

Restore Backup Profiles Physical Restore Physical Backup SOS Management Host Reports Run Job Migration

Restore Object(s) - 1

Files MS SQL Databases Exchange Server Windows Snapshot

Name	Restore to	Subdirs	Options	Date
/DBbackup/winestore_backup...	/DBbackup/winestore_backup...		Include	2011 07/26 09:0

UID/GID Options

- Restore using GID number rather than name
- Restore using UID number rather than name

Sparse File Options

- Write Sparse Files

Boundary size: 8192

Directory Options

- Restore changes UID/GID and attributes
- Allow restore to a different File-System

General Windows Novell Options Lotus Notes R5/6 **UNIX Options** Date Limits

Remove Select all New Save Save as... Individual file options

Target: LINUX123.CA.COM Browse... Monitor... Options... Start restore

Target: LINUX123.CA.COM (-) Profile: LINUX123 Parameter file: 'Untitled' Action: Restore

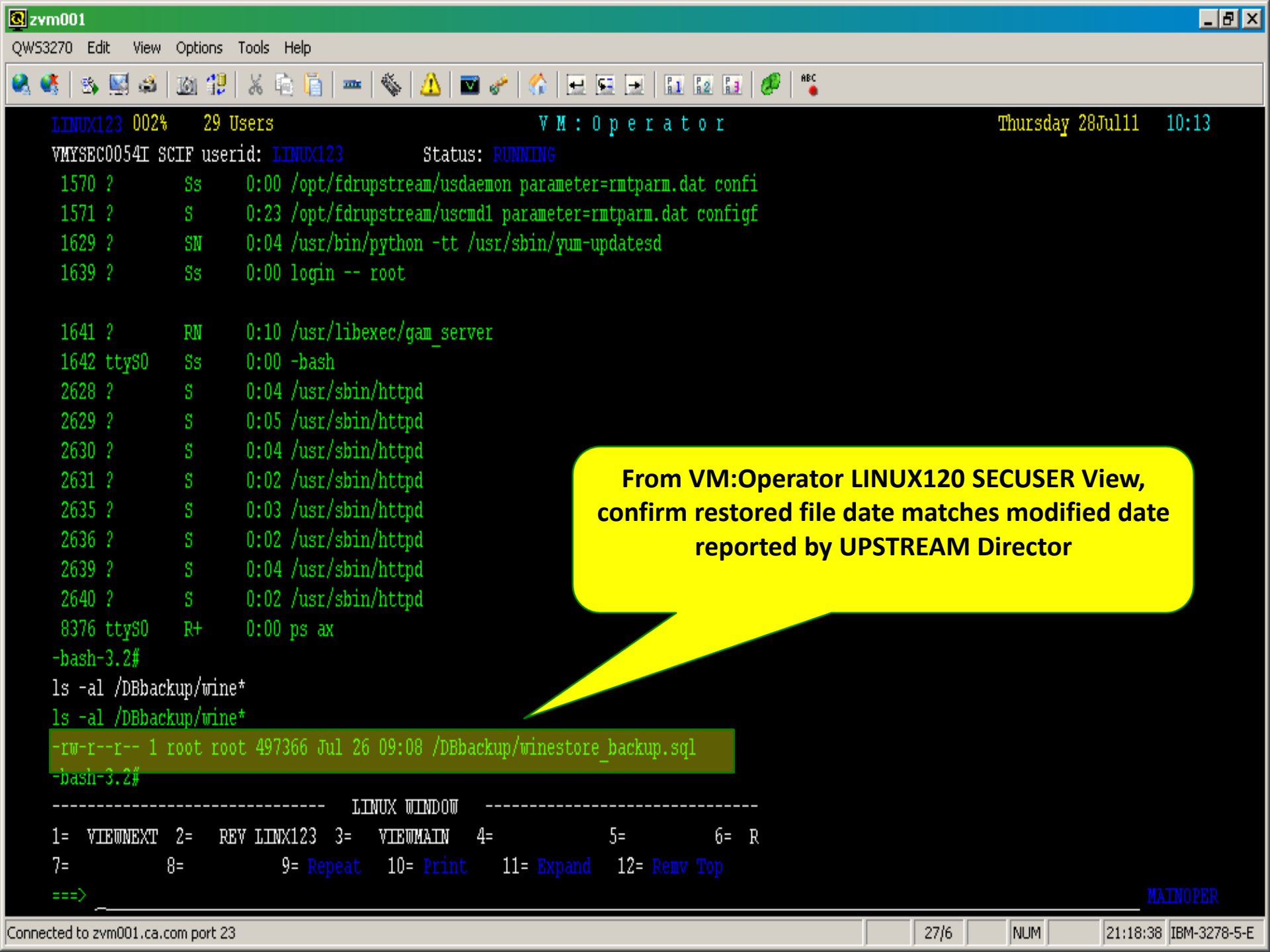
UNIX/LINUX specific restore options

UPSTREAM® Director Java Interface

The screenshot displays the UPSTREAM Director Java Interface within a Microsoft Internet Explorer browser window. The interface includes a menu bar (File, Options, View, Help, Window) and a toolbar with various icons. A navigation bar at the top contains tabs for Restore, Backup, Profiles, Physical Restore, Physical Backup, SOS Management, Host Reports, Run Job, and Migration. The main window area is divided into several panes. On the left, a 'Restore Object(s) - 1' pane shows a file tree with 'DBbackup/winstore_backup.sql' selected. A central 'Restore Status At Target 'LINUX123.CA.COM'' dialog box displays the following running statistics:

Running statistics		
Version Date:	2011 07/26 09:08:39 AM	
Time of Restore:	00:00:04	Estimated time remaining: 00:00:00
Restore Entry:	DBbackup/winstore_backup.sql	
File:		
File Byte Count:	1	Tot
File Size (bytes):		Tot
Average chars/second:	124,341	Sys
Percent File Complete:	100%	
Percent Total Complete:	100%	

Below the statistics, a 'Monitor Graph - Characters per second' area shows a blacked-out graph with the text 'Action complete' centered. An 'Ok' button is visible at the bottom of the status dialog. A small 'Restore Complete At Target 'LINUX123.C...' message box is also present. The bottom status bar indicates: Target: LINUX123.CA.COM (+), Profile: LINUX123, Parameter file: 'Untitled', Action: Restore.



LINUX123 002% 29 Users VM:Operator Thursday 28Jul11 10:13

VMYSEC0054I SCIF userid: LINUX123 Status: RUNNING

1570 ? Ss 0:00 /opt/fdrupstream/usdaemon parameter=rmtparm.dat confi
1571 ? S 0:23 /opt/fdrupstream/uscmd1 parameter=rmtparm.dat configf
1629 ? SN 0:04 /usr/bin/python -tt /usr/sbin/yum-updatesd
1639 ? Ss 0:00 login -- root

1641 ? RN 0:10 /usr/libexec/gam_server
1642 ttyS0 Ss 0:00 -bash
2628 ? S 0:04 /usr/sbin/httpd
2629 ? S 0:05 /usr/sbin/httpd
2630 ? S 0:04 /usr/sbin/httpd
2631 ? S 0:02 /usr/sbin/httpd
2635 ? S 0:03 /usr/sbin/httpd
2636 ? S 0:02 /usr/sbin/httpd
2639 ? S 0:04 /usr/sbin/httpd
2640 ? S 0:02 /usr/sbin/httpd
8376 ttyS0 R+ 0:00 ps ax

**From VM:Operator LINUX120 SECUSER View,
confirm restored file date matches modified date
reported by UPSTREAM Director**

-bash-3.2#

ls -al /DBbackup/wine*

ls -al /DBbackup/wine*

-rw-r--r-- 1 root root 497366 Jul 26 09:08 /DBbackup/winestore_backup.sql

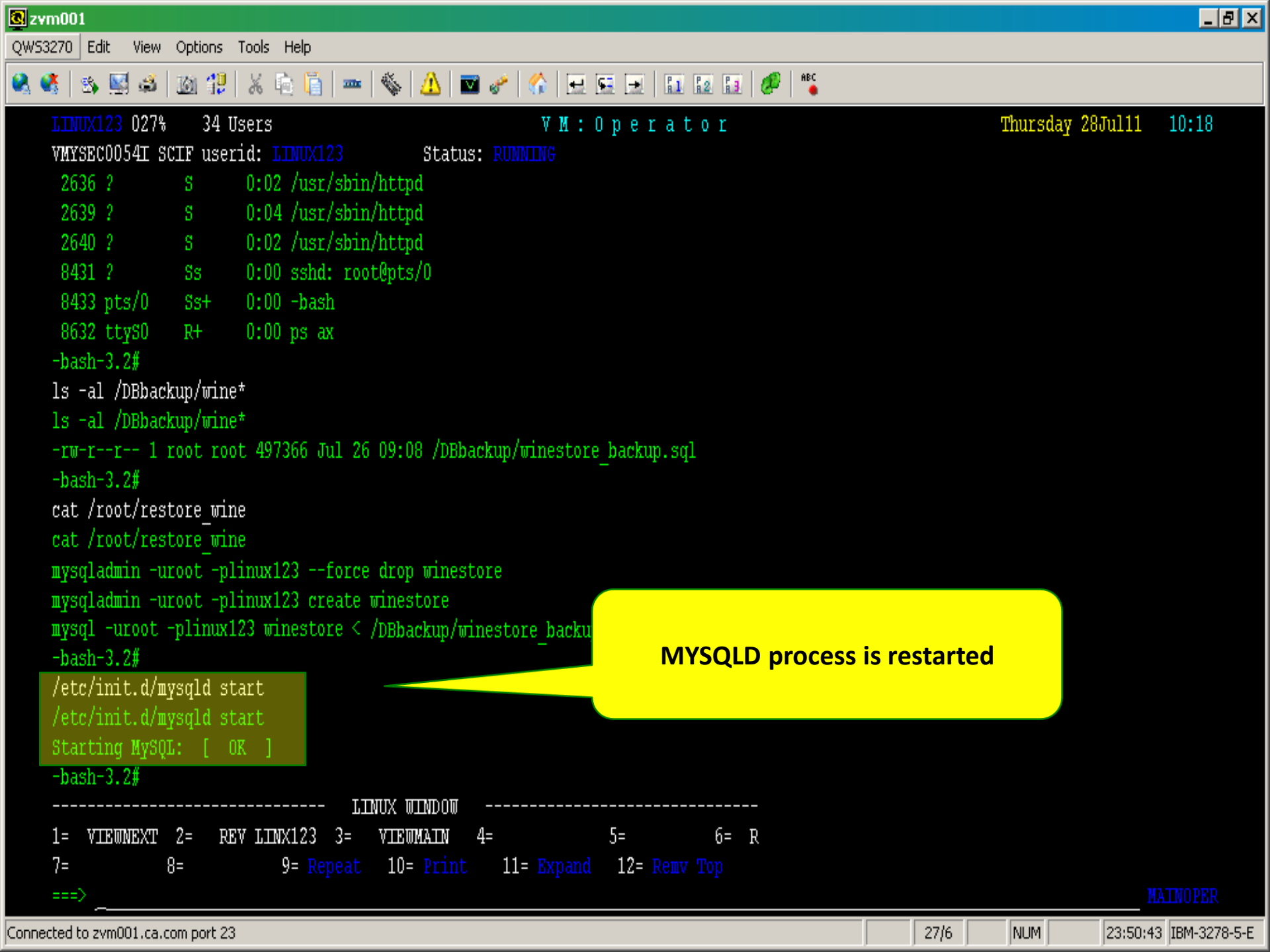
-bash-3.2#

LINUX WINDOW

1= VIEWNEXT 2= REV LINUX123 3= VIEWMAIN 4= 5= 6= R
7= 8= 9= Repeat 10= Print 11= Expand 12= Remv Top

==>

MAINOPER



LINUX123 027% 34 Users VM: Operator Thursday 28 Jul 11 10:18

VMYSEC0054I SCIF userid: LINUX123 Status: RUNNING

2636 ? S 0:02 /usr/sbin/httpd

2639 ? S 0:04 /usr/sbin/httpd

2640 ? S 0:02 /usr/sbin/httpd

8431 ? Ss 0:00 sshd: root@pts/0

8433 pts/0 Ss+ 0:00 -bash

8632 ttyS0 R+ 0:00 ps ax

-bash-3.2#

ls -al /DBbackup/wine*

ls -al /DBbackup/wine*

-rw-r--r-- 1 root root 497366 Jul 26 09:08 /DBbackup/winestore_backup.sql

-bash-3.2#

cat /root/restore_wine

cat /root/restore_wine

mysqladmin -uroot -plinux123 --force drop winestore

mysqladmin -uroot -plinux123 create winestore

mysql -uroot -plinux123 winestore < /DBbackup/winestore_backup.sql

-bash-3.2#

/etc/init.d/mysql start

/etc/init.d/mysql start

Starting MySQL: [OK]

-bash-3.2#

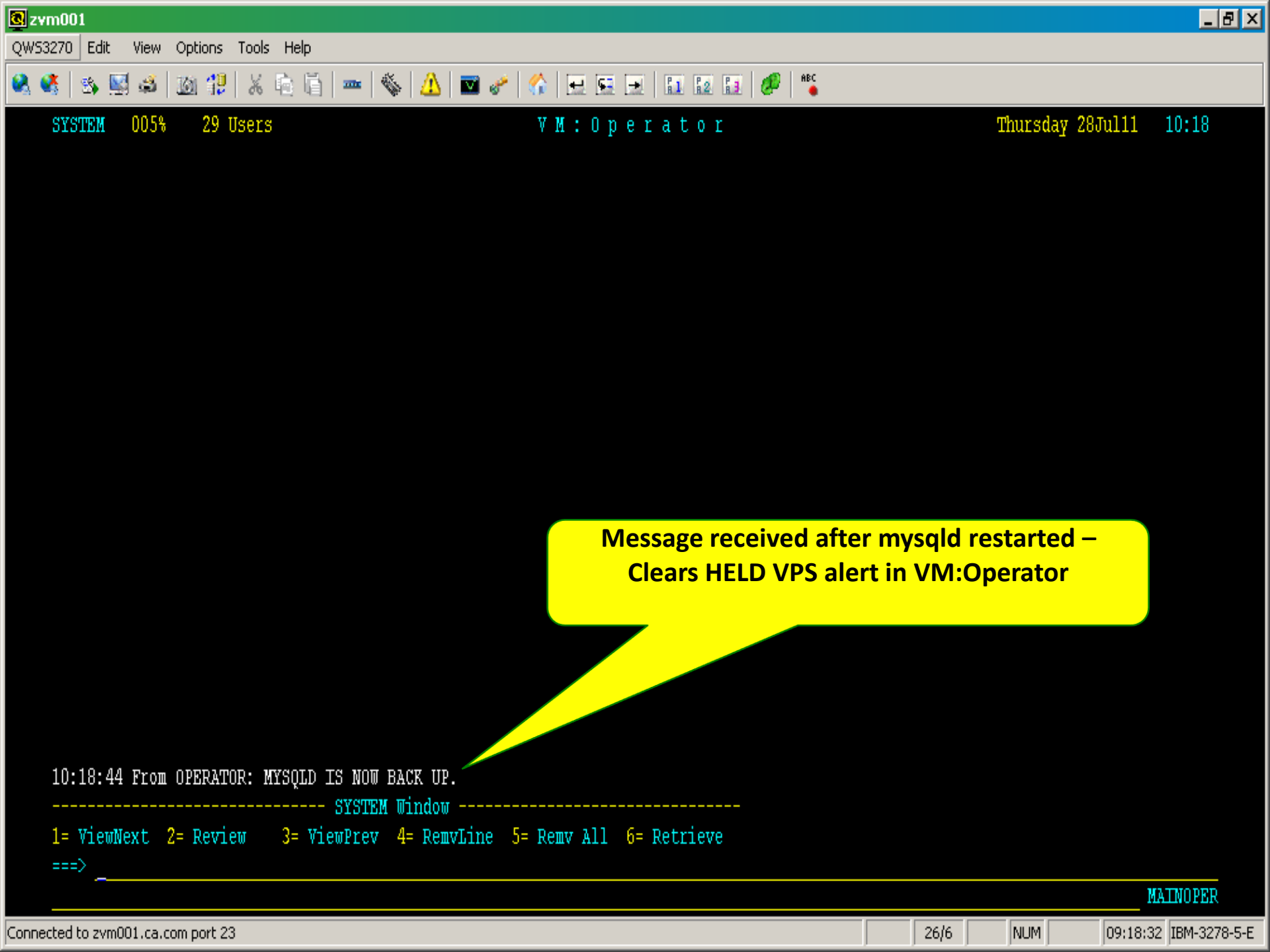
MYSQLD process is restarted

LINUX WINDOW

1= VIEWNEXT 2= REV LINUX123 3= VIEWMAIN 4= 5= 6= R
7= 8= 9= Repeat 10= Print 11= Expand 12= Remv Top

==>

MAINOPER



**Message received after mysqld restarted –
Clears HELD VPS alert in VM:Operator**

10:18:44 From OPERATOR: MYSQLD IS NOW BACK UP.

----- SYSTEM Window -----

1= ViewNext 2= Review 3= ViewPrev 4= RemvLine 5= Remv All 6= Retrieve

===>

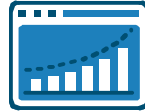
MAINOPER

The CA Solution Portfolio

CA VM:Secure
CA VM:Director
CA VM:Archiver



CA Wily Application
Performance Management



Application
Performance
Management

CA SiteMinder Web Access
CA Access Control
CA Top Secret® for z/VM
CA ACF2™ for z/VM
CA VM:Secure



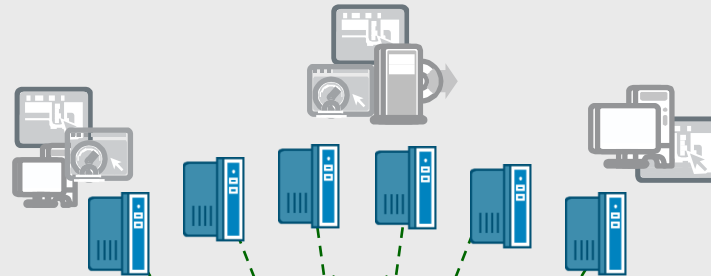
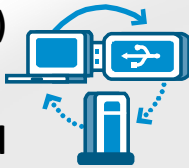
Security



CA VM:Backup
CA VM:Tape

INNOVATION
Data Processing
Data Protection
UPSTREAM

CA ESP Workload Automation
CA Autosys Workload Automation
CA Universal Job Management
(Agents)
Workload
Automation



PAM Server
for TSS and
ACF2

CA VM:Operator™



CA Solve
Operations
Connector for
Linux
Consolidated
Event
Automation

CA VM:Manager Suite
for Linux on System z



z/VM
Management



Linux on z
Performance
Management
VPS™

Interested in Seeing More?

Join us at the CA Technologies Booth in the Share Technology Exchange for a closer look!

Also, visit the CA Linux Management for Mainframe web portal at:

<http://www.ca.com/us/mainframe-linux.aspx>

CA VM:Manager Suite for Linux on System z *new releases*

CA VM:Manager™ Suite for Linux on System z

New releases of CA z/VM products simplify environment

Security

CA Top Secret® for z/VM
CA ACF2™ for z/VM
CA VM:Secure

Disk Storage Assets

CA VM:Account™
CA VM:Director™

Storage Backup/Recovery

CA VM:Backup™
CA VM:Archiver

Resource Chargeback

CA VM:Account™

Performance Tuning

CA Explore® Performance
Management for z/VM

CA VM:Operator™

Operations Management

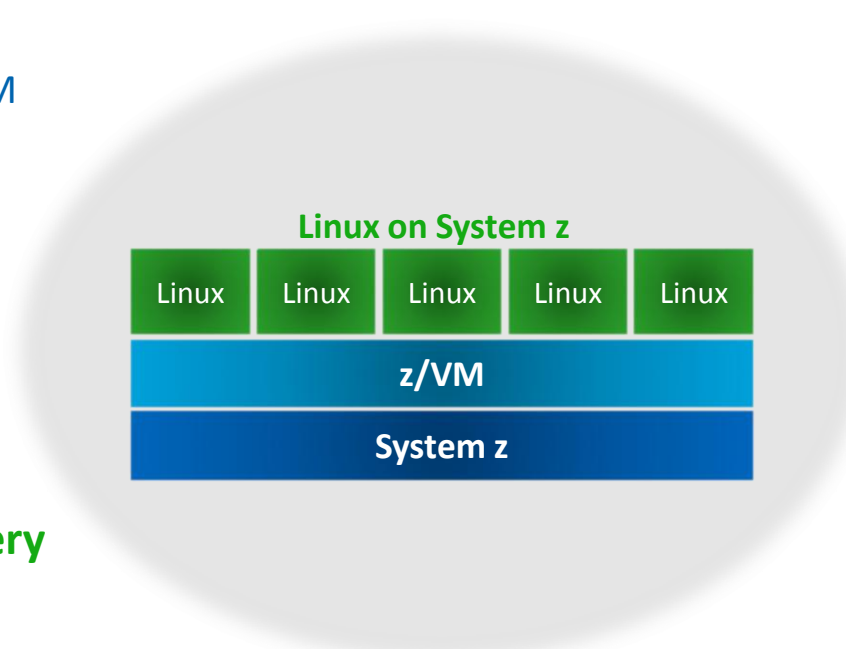
CA VM:Operator™
CA VM:Schedule™
CA VM:Spool™
CA VM:Sort™
CA VM:Batch™

Provisioning

CA VM:Director™
CA VM:Secure
CA VM:Archiver™

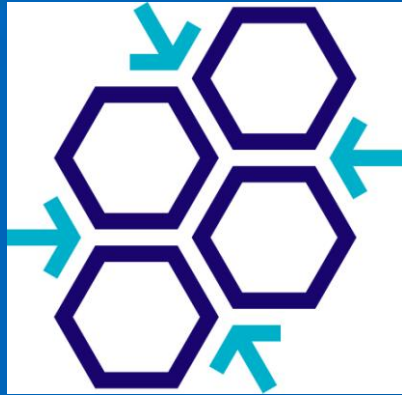
Tape Management

CA VM:Tape™
CA Dynam/T for z/VM



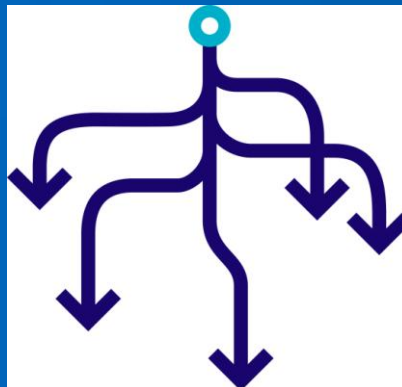
CA z/VM solutions and Mainframe 2.0

reduce complexity – speed implementation



standardize on IBM VMSES/E to install and service all CA z/VM products

- industry standard procedures reduce “experience pool” requirements
- consistent look and feel enables products to be managed without a significant skills investment
- common procedures for all products reduce complexity, speed implementation



CA Mainframe VM Product Manager

- install and maintain products in single library, deploy wherever needed
- automatic provisioning of servers with CA VM:Secure or CA VM:Director

infrastructure enhancements

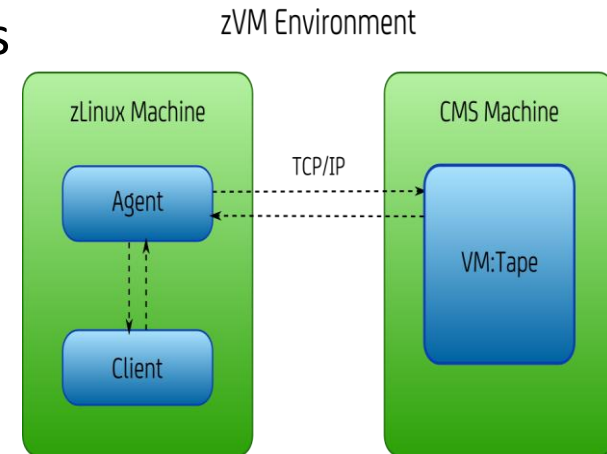
common code infrastructure improvements:

- **additional products ported to exploit CA VM Common Nucleus collection of services and routines**
- **single z/VM object directory reader program called by all products requiring directory look-up services**

using common code across products enables CA Technologies to deliver new features, enhancements, and problem solutions more quickly and efficiently

CA VM:Tape Linux on System z Interface features

- Exploit VM:Tape functionality in Linux applications
- Mount tape from Linux on System z
- Hardware support via IBM Linux kernel driver
- TCP/IP used for Linux to VM:Tape communication
- Shipped in standard RPM package
- Centralized tape management on Linux guest that does not expose sensitive interfaces (such as VMCP) to regular users
- Regular (non root) users are able to mount tapes
- After successful mount there are corresponding devices in /dev owned by the user who issued the mount
- Provides authorization handling for both mounted and saved tapes



Additional CA VM:Tape enhancements

CA VM:Tape



MOUNT command enhancement

- Use new user exit USREXIT9 to retrieve information about tape drive
- Enables operators to make decisions about automation and action routines

MOUNT and CANCEL message enhancements

- Real device address added to messages 0014I, 0051T, 0100I to enhance their use for automation purposes

VMTAPE QUERY enhancements

- QUERY VOLUME command displays additional information about tapes
- Display information about deleted tapes and tapes not in TMC if maintained in IBM or STK robotic tape subsystem

QUERY command authorization change

- OPERATOR authorization no longer required for QUERY, QUERY TAPES, and QUERY REQUESTS
- Users can obtain information about pending MOUNT and ALLOCATION requests

CA VM:Secure enhancements

VMCIPHER and file encrypting logic and configuration of RC2 encryption removed

- Promotes use of stronger encryption algorithms to improve security for sensitive data
- Encrypt data using DES, Triple DES, and AES is retained



VLAN rules support

- Control access to Guest LANs and virtual switches
- Make access requests explicitly using COUPLE command or implicitly by defining value for LAN operand on NICDEF CP Directory statement
- COUPLE rule definition replaces GRANT operand on a SET VSWITCH or SET LAN command
- For a VLAN-aware virtual switch, set of VLAN ID values may be defined to restrict access to specified IEEE VLANs
- COUPLE RULE option grants PROMISCUOUS mode access for special purpose network debugging programs

additional CA VM:Manager Suite enhancements

CA VM:Account

- Toleration support for CPU type codes
- Cost table support for switch class devices

CA VM:Archiver

- SYSID resolution
- Additional linemode command
- Additional parameters passed to VMAEXIT1

CA VM:Backup

- Option EDRSUP default set to ON
- CA VM:Backup HiDRO Feature encryption support

CA VM:Schedule

- Passphrase and DMSPASS/DMSPWCHK support enables z/VM logon password phrases of up to 200 characters

CA Explore Performance Management for z/VM

- Data collection via IBM standard monitor records

CA VM:Account



CA VM:Archiver



CA VM:Backup



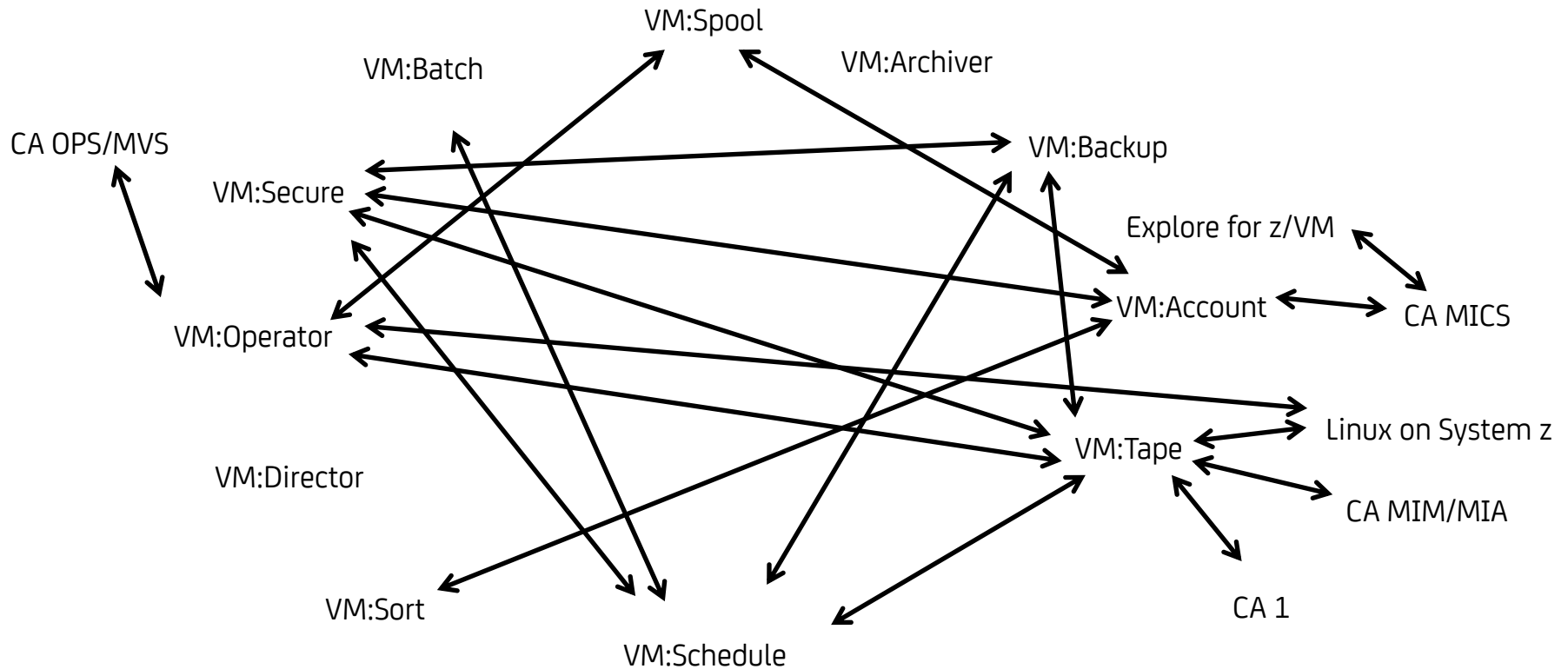
CA VM:Schedule



CA Explore
Performance
Management
for z/VM



CA VM:Manager Suite for Linux on System z provides extensive integration

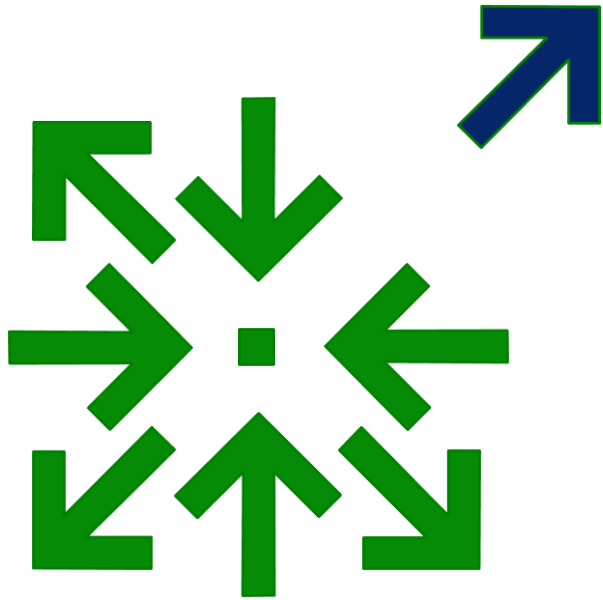


Roadmap Overview

- Day One support for z/VM 6.x.x and future releases
- Day One support for z/VM Single System Image, plus enhancements to allow exploitation of Single System Image architecture
- Deliver remaining products in IBM VMSES/E format in support of CA's Mainframe 2.0 strategy
 - CA Dynam/T Tape Management for z/VM
 - CA VM:XMENU
 - CA VTERM
- Deliver enhancements to improve Linux guest management
- Deliver enhancements in response to customer demand



Improve capability to manage Linux on System z guests



- Integration of new CA offerings with existing z/VM product suite to enhance management of z/VM and Linux on System z environments
 - modernize the user interfaces
 - simplify reporting capabilities
 - Automate and simplify Linux on System z provisioning
- CA VM:Operator enhancements to allow simpler and more secure automated management of Linux on System z guests

Questions ???

Contact Information

Brian Jagos

Principal Consultant

CA Technologies

E-mail: brian.jagos@ca.com

Office: 631-342-6523

Cell: 516-749-6654

Summer Spaulding

Principal Engineering Services Architect

CA Technologies

E-mail: summer.spaulding@ca.com

Office: 214-473-1641

Cell: 214-213-9650